

r. maresch & son

CANADA'S PREMIER STAMP AUCTION HOUSE SINCE 1924



r. maresch & son

CANADA'S PREMIER STAMP AUCTION HOUSE SINCE 1924

6-2 VATA COURT, AURORA, ON LG4 4B6 CANADA

(905) 726-2197

www.maresch.com

SEPTEMBER 10, 2020

AUCTION SALE

560

Welcome to our 560th Auction Sale. We hope this catalogue finds you well and keeping safe.

This is an unprecedented time we are living in with the Novel Corona 19 virus. As you can imagine, the government stay home orders and the safety concerns related to this virus have created a new way of doing business for everyone including us here at R. Maresch & Son. We are currently working with a "family only" crew in the office, which allows us to keep together safely. My son Charlie 10 and daughter Jillian 8 have been helping with the many odd jobs that need to be done including learning to catalogue collections. Many of you may have talked to Jill as she has taken to answering the phones. The fourth generation of Maresch's has begun.

Our April sale was remarkably successful, realizing over 120% of pre-sale estimates. Since we were not able to have a live auction floor, we held the sale through Stamp Auction Network's online bidding platform. We were incredibly pleased with the audience and participation that we received. We will continue to hold our public unreserved auctions but for the time being we will not be having a live floor to keep us all safe. To participate in this auction please use Stamp Auction Network's live bidding. We will also, as usual be accepting bids in our normal methods of mail and email.

We will be doing our best to accommodate as many of our clients for viewing as possible in our offices. We will be holding viewing by appointment, to keep everyone safe. Masks are now mandatory in York Region, where the office is located. Please make sure to bring one. We have hand sanitizers at the front door and in the viewing area also.

This auction has many lovely individual items as well as large multi-carton lots. Canada including Large Queens, Nova Scotia, British Honduras are just a few of the collections we are offering in this sale.

The Maresch Family

TERMS OF SALE

1. **ALL LOTS IN THIS AUCTION ARE OFFERED WITHOUT RESERVE.** All bids are per lot as described in this catalogue. The right is reserved to withdraw any lot prior to sale, to divide a lot, or to group two or more lots belonging to the same vendor. The auctioneer shall regulate the bidding on the floor. The auctioneer reserves the right to reject any bid. In the event of any dispute, their decision shall be final.
2. The highest bidder shall prevail at one advance over the next highest bidder. Tie bids shall go to the first received. **A BUYER'S PREMIUM OF 18% WILL BE ADDED TO THE HAMMER (SELLING) PRICE AND BECOMES PART OF THE TOTAL PURCHASE PRICE.**
3. Successful FLOOR BIDDERS must pick up their lots or arrange for delivery immediately after the sale. PAYMENT IS DUE AT THIS TIME. MAIL BIDDERS known to us may have their lots forwarded for payment within three days. Others will receive an invoice immediately after the sale and must make remittance before lots are sent. Overdue accounts will be billed a 3% service charge per month. Lots not picked up and paid for after 30 days may at our discretion, be re-offered in the next available auction. Ownership shall not pass to the buyer until full payment has been received.
4. Shipping and handling are charged to the account of the buyer. Shipments to Canada will be sent by Expedited parcel, to USA by Tracked Packet-USA or Xpresspost USA, all other destinations up to 500g will be sent by registered mail, larger parcels by Xpresspost International, Tracked Packet International (where available), or by Priority Worldwide, or comparable secured methods.
5. In our opinion, all lots are as described. If a prospective purchaser wishes to obtain another expert opinion - acceptable to us - on a lot (not including mixed lots or collections containing undescribed stamps), they must request an extension in writing **before** the auction (on the bid sheet is acceptable). Lots sold under this condition shall be held open for up to 120 days, after which the lot will not be returnable for any reason. **Items that already have certificates are sold on the basis of those certificates (unless otherwise stated in the description). Buyers wanting to place a lot on extension for a different certificate must discuss that with us BEFORE the auction to obtain approval to bid on that basis.** Expenses for certificates shall be borne by the purchaser. If a negative opinion is received within the 120 days, the purchase price will be refunded in full, and the expertising fee (to a maximum of \$50) will be paid by us. All lots sent on extension must be paid for under our normal terms. The inability of an expert committee to render an opinion on a lot is insufficient grounds for its return.
6. Claims for errors in description, including condition, must be made within 7 days after receipt, but no later than 45 days after the auction. Stamps returned must be in the state received and must be sent by a signature mail service or bonded courier. Lots that have been back stamped, marked or encapsulated by experts or expert committees are not returnable. It is the purchaser's responsibility not to let this happen. Stamps described as having defects are not returnable on account of their condition. No lots may be returned by bidders who have had an opportunity to examine, or an agent, view them on their behalf before the sale, nor any stamps which have been photographed for perforations, centering, margins or cancellations. All stamps photographed in colour are reproduced with extreme care as to accuracy of colour and shades, however stamps photographed in colour may not be returned because of shade differences or centering between the lot and photograph.
7. All lots are sold in **CANADIAN FUNDS**. Lots picked up in Ontario will be charged H.S.T., lots delivered in Canada will be charged the appropriate G.S.T. or H.S.T. For the convenience of our American clients, U.S. funds will be accepted at a rate of exchange to be determined by the auctioneer and announced at the opening of the sale. If you wish to pay in U.S. funds, please pay the amount stated on your invoice.
8. **QUALITY RATINGS:** Superb, extremely fine, very fine, fine to very fine, fine, very good, and good.
9. **CATALOGUE NUMBERS AND VALUES** used are from the current edition of Scott's Standard Postage Stamp Catalogue, and are quoted in US dollars. For B.N.A. material are from the current edition of the Unitrade Canada Specialized Catalogue and are in Canadian dollars, with appropriate premiums. When we catalogue a collection we omit all obviously faulty, damaged, faked or forged stamps; our count of the stamps and catalogue value will be a conservative calculation. Owners sometimes catalogue every stamp or portion thereof, regardless of quality. We accept no responsibility for these valuations. Errors may occur nevertheless and (in spite of all our careful work) all collections are sold "as is".
10. **AGENTS BIDDING ON BEHALF OF OTHERS:** If you have complicated bids to be executed or wish an outside opinion as to the value and condition of a lot we shall be pleased to furnish a list of agents. If you instruct your agent to bid on the basis of our descriptions, we presume that they have inspected the lot and agree with our description in executing your bid. **Agents must register their bidders and obtain approval before our sales start.**
11. This sale is conducted by and for the account of R. Maresch & Son Auctions Limited.
12. THE PLACING OF A BID SHALL CONSTITUTE ACCEPTANCE OF THESE TERMS OF SALE.

ABBREVIATIONS AND SYMBOLS

O used	L literature	S Specimen
☒ cover, card	lh lightly hinged	s/s souvenir sheet
★★ original gum, never hinged	LL lower left	SG Stanley Gibbons Catalogue
★ mint with original gum	LR lower right	SON socked-on-the-nose cancel
(★) no gum or regummed	MC Maltese Cross cancel	UCS Unitrade Canada Specialized Catalogue
ACSC Australian Commonwealth Specialists' Catalogue	Mi Michel	UL upper left
BOB back of book	ms manuscript	UR upper right
cds circular date stamp	NSSC Newfoundland Specialized Stamp Catalogue	vf very fine
CP Campbell Paterson Specialized New Zealand	nh never hinged	vlh very lightly hinged
E essay	og original gum	Y&T Yvert & Tellier Catalogue
F forgery	P proof	Zum Zumstein Switzerland Specialized Catalogue
Hh heavily hinged	PP plate position	€ Euro
Hr hinge remnant	R&S Reiche and Sendbuehler	£ British Pound Sterling
hs hand stamp	SASCC South African Stamp Colour Catalogue	¥ Japanese Yen

Mail bids not conforming to these intervals will be reduced to conform.

BIDS	INCREMENT	BIDS	INCREMENT
Up to \$100	5	Up to \$5000	250
Up to \$300	10	Up to \$10000	500
Up to \$1000	25	Up to \$30000	1000
Up to \$2000	50	Over 30000	2500
Up to \$3000	100		

AUCTION CATALOGUES AND PRICES REALIZED. If you wish to continue to receive our catalogues and prices realized, please subscribe or you may be removed from our list.

r. maresch & son



AUCTIONS LIMITED

2 VATA CRT UNIT 6 AURORA ON L4G 4B6 CANADA

☎ (905) 726-2197 **www.maresch.com** E-MAIL bids@maresch.com

I hereby authorize R. MARESCH & SON AUCTIONS LIMITED to purchase on my behalf the following lots, at or under the limit stated. I have read and agree to the terms of sale as printed in the catalogue.

Bidder's Name and Address (please print)

- Please check if this is a change of address.
- Please check if you have read our shipping terms.

E-mail address _____

- Please e-mail me an invoice if successful.

A Buyers' Premium of 18% will be added to the hammer price and becomes part of the total purchase price.

☎ PHONE _____ (Required for customs outside CANADA) FAX _____

- You may increase my bids by one increment to break ties. **Signature** _____
- I will charge my purchases to my credit card at <https://www.maresch.com/bidding/pay-invoice-online> and pay the 3.25% convenience fee.

SHIP LOTS UNDER \$ _____ BY REGULAR MAIL AT MY RISK, PAYMENT WILL BE SENT FIRST.

ALL BIDS MUST REACH OUR OFFICES NO LATER THAN
9:00 AM EST BEFORE THE BEGINNING OF EACH SESSION

PLEASE SEND BEFORE THE LAST DAY AS IT TAKES TIME TO ENTER ALL THE BID SHEETS

Lot No.	Bid	Lot No.	Bid	Lot No.	Bid	Lot No.	Bid
						BIDS INCREMENTS Up to 100 5 200-300 10 300-1000 25 1000-2000 50 2000-3000 100 3000-10000 250 10000-20000 500 Over 20000 1000	

CALL US TOLL FREE IN CANADA AND UNITED STATES at 1-800-363-0777



Lot No.	Bid	Lot No.	Bid	Lot No.	Bid	Lot No.	Bid

**FIRST SESSION – THURSDAY SEPTEMBER 10TH
AT 9:30 AM EST - SALE 560**

CANADA

COLLECTIONS AND LARGER LOTS

- 1 ★★ Accumulation of mostly blocks and singles in 5 binders plus a 1988 annual collection, and a few cpl sheets, mostly 45¢ to 95¢, nh and f-vf. (Face val - \$1470)
- 2 ★★ Accumulation of \$1 to \$10, values incl sheets, panes, booklets and blocks, few 'P's, nh and f-vf. (Face val - \$530)
- 3 ★★ Accumulation of thousands of mint including complete sheets, 593b Plate 6, tagging, paper varieties, plate blocks many in original PO packs, 20¢ Forestry, Centennials, mostly 1960s and 1970s issues, appears mostly nh, f-vf. Plus precancels and Dues not counted. (Face val - \$2495)
- 4 ★★ Over 200 complete sheets and panes, 1¢ to 64¢ values, some folded, noted a tagging variety on sheet of 586, mostly nh, f-vf. (Face val - \$3959)
- 5 ★★ Over 1000 \$1 and \$2 values, 2 panes of \$8, in blocks, panes and cpl sheets, etc, mostly nh, f-vf. (Face val - \$1507)
- 6 ★★ Over 165 \$5 values, various issues, mostly blocks with a couple of complete sheets of 25, nh, f-vf. (Face val - \$805)
- 7 ★★ Accumulation of complete sheets and panes with a few blocks, mostly 30¢ to 48¢ values, up to 95¢ value, clean, mostly nh, f-vf. (Face val - \$5438)
- 8 ★★ Accumulation of mostly complete sheets, blocks, strips, 1980 year sets and a couple of booklets, mostly 5¢ to 8¢ values, \$ values, mostly nh, f-vf. (Face val - \$479)
- 9 ★★ Accumulation of \$1 to \$5 values up to 2017 with souvenir sheets, many NHL issues including \$5 Maple Leaf Jersey, nh, f-vf. (Face val - \$701)
- 10 ★★ Accumulation of mostly 1970s issues in large part or complete sheets, incl \$ vals, Olympic low vals, some selvedge faults, mostly nh, f-vf. (Face val - \$828)
- 11 ★ Accumulation of mostly \$1 and \$2 values, few \$5 and other values, mostly nh, f-vf. (Face val - \$203)
- 12 ★ Collection of mint 1977 to 2014 in eight albums and loose, mostly in singles and sets, with over 500 'P's and over \$280 in \$ and above. mostly nh and fine. (Face val - \$1903)
- 13 ★ Accumulation of mint mostly 1940s to 2000s, incl over 80 'P's, booklets, mini sheets, blocks and single, some duplication, otherwise fine. (Face val - \$699)
- 14 ★ Accumulation of mostly blocks, singles, sheets, a few year sets, good percentage between 1¢-8¢ and 35¢-49¢ values, a few year sets, over \$50 in \$ values, a few 'P's, mostly nh, f-vf. (Face val - \$3604)
- 15 ★ Accumulation of high values, incl \$1 (60), \$2 (59) and \$8 (4), nh and f-vf. (Face val - \$210)
- 16 ★ Over 100 mint \$1 to \$8 vals mostly nh and f-vf. (Face val - \$214)
- 17 ★ Accumulation of mint, from 1¢ to 95¢ vals, loose in packets, no \$ or 'P', incl booklets, blocks, Quarterly packs, cpl sheets, large quantities of 43¢ and 45¢, mostly nh and f-vf. Inspect. (Face val - \$2132)
- 18 ★ 284/3136: Collection of mint 1948 to 2018, in 6 Davo albums, virtually cpl for the period with souvenir sheets, etc, with over 300 \$ values and over 830 'P' stamps, mostly nh, f-vf. (Face val - \$2227)
- 19 ★ Accumulation of 1950s to 2000s mint, loose, collections, annual packs, mostly nh, f-vf. (Face val - \$3898)
- 20 ★ Collection of 1950s to 2014 on hingeless album pages, fairly complete including over 256 P stamps, mostly nh, f-vf. (Face val - \$1485)
- 21 ★O A mint collection early Elizabeth onward, mostly 4¢ to 39¢ with some \$ values, much is nh, also a used collection 1900s onwards, with Newfoundland, duplication, otherwise fine. Inspect. (Face val - \$540+)
- 22 ★O☒ Property as received, mint Canada 1950s to early 1990s, Canadian FDC 1979 to 1986 and an album of world, modern postcards, appears f-vf. Inspect. (Face val \$313)
- 23 ★ Accumulation of mostly blocks, with multiples and panes, 1¢ to \$1 values, good portion of 5, 8, 14, 15¢ plus 17¢, 32, 34 and 50¢ values, a few \$ values, mostly nh, f-vf. (Face val - \$819)
- 23A ★ Collection of 1950s to 2000 mint with many blocks of 4, mostly nh, f-vf. (Face val - \$1975)
- 24 ★★ **BOOKLETS:** Accumulation of mostly 1980s to 2000s issues with mostly 45¢ to 52¢ values, up to 98¢, nh and f-vf. (Face val - \$470)

25	★★	BOOKLETS: Collection of over 190 booklets, 1942 to 1995 with some earlies including BK32, BK37F, BK39a, etc, a few panes, some duplication, nh, f-vf. (Face val - \$366)
26	★★	Over 280 'P' stamps, in booklets, sheets, self adhesives, nh and f-vf. (Face val - \$257).....
27	★★	Accumulation of over 1675 "P" Permanent stamps, including singles, booklets, souvenir sheets, much is self adhesive, a few booklets not complete, nh, very fine. (Face val - \$1541)
28	★★	ANNUAL COLLECTIONS: Accumulation of 1974 to 2011 including two Millennium collections, some sealed, duplication up to 4 each, appears nh, f-vf. (Face val - \$883)	3220
29	★★	1995 to 2019 sealed Quarterly Packs, some duplication, nh, f-vf. (Face val - \$1938).....
30	★	Twenty-two, 1979 to 2001, no 1999, mostly still sealed, nh and f-vf. (Face val - \$513)
31	★	1993 to 2000, mostly with two sealed copies of each issue, also 1978 x3 copies, 1989 x1 copy, plus Small Craft x3 copies, Public Gardens, much nh and fine. (Face val - \$650+).....
32	★★	THEMATICS: Over 180, 45 different, nh, f-vf. (Face val - \$363)	2548
33	★★	141/846: Collection of over 120 mint, 1927 to 1979 virtually complete from 1932, incl Airs, etc, in hingeless album plus modern plate blocks, clean and almost entirely nh, f-vf. Cat as fine only	1449
34	★★	74/321: 30 complete sheets, ½¢ Numeral missing selvedge, 1¢ Confederation overall disturbed gum, 8¢ to 14¢ Peace, 1950 50¢ Oil Wells, etc, otherwise nh, f-vf. Cat as fine only.....	2900
35	★★	34/273: 150 mostly different including Small Queens, Jubilees, Leaf, Numeral, Admirals, Scroll with 50¢ and \$1, coils, etc, all nh, f-vf.....	Photo Online 3414
36	★	52/302: Collection of over 125 different mint blocks, plus some duplication, with Jubilees, Leafs, Numerals, Maps, Edwards, Quebecs, complete sets of Arch, Medallion, Silver Jubilee, '35 Maple Leaf, and Peace. Many never hinged, some plate blocks Medallions, BC logging, \$1 Fish, some toning on earlier, otherwise appears f-vf, huge catalogue value. Inspect	10228
37	★	Accumulation of mint Admiral coils onwards, Admiral imperforates, Leafs and Scroll, in part sets, Medallion, 1938 Pictorial, War, Peace, Airs, Provinces incl New Brunswick, Nova Scotia Newfoundland, Officials both O.H.M.S. and G, mostly Elizabeth, plus three reference books, some duplication, much is nh and fine. Inspect. Est. 1000+
38	★	50/294,etc: Collection of singles, blocks, plate blocks and large multiples incl Jubilees, 8¢ Numeral (16), Admirals, \$1 (20), Dues in complete sheets, Officials, Revenues, Newfoundland, etc, much is nh, mostly f-vf. Inspect.	12872
39	★	50/330,etc: Collection in Lindner hingeless album 1897 to 1947, mostly mint, some nh, incl Jubilees to 10¢, Admirals to 1953 complete including coils, Airs, Special Delivery, Dues, O.H.M.S., 'G', Registered cpl, War Tax, some earlier with gum and centering issues, otherwise appears clean f-vf. Inspect.....	4994
40	★	85/302,etc: Accumulation of over 800 mint mostly on 102 cards, including Edwards, Quebecs, George V (no Admirals), Scroll, Arch, \$ vas, duplication, plus some BOB issues not included in totals, quality a bit mixed, much is nh, mostly f-vf	10337
41	★	34/321,etc: Over 1300 mint, including Leafs, Maps, Quebecs, Admirals and George V issues, neatly sorted on retail pages, neatly identified, duplication to about 60, some earlier a bit mixed, mostly appears f-vf, some without gum not included in totals	5144
42	★	50/281,etc: Collection of over 300 mint, virtually complete on hingeless pages with Jubilees cpl to 50¢, Leaf cpl, Numeral cpl, Edward cpl, Airs cpl, Dues (violet) cpl, Registered cpl, O.H.M.S. and G ovpt cpl, some questionable or regummed a few without gum, appears mostly fresh and f-vf. Inspect.	8761
43	★	34/411,etc: Over 600 mint including Small Queens, Leaf, Numeral, Map, Edwards, Quebecs, Admirals to \$1, Scroll to \$1, Arch to \$1, Pictorial to \$1, BOB with Officially Sealed, quality mixed, much appears f-vf. Inspect	13495
44	★	74/103: Thirty-six mostly different incl Leaf to 10¢, Numeral to 20¢, Maps, Provisional narrow spacing, Quebecs to 20¢, clean, some hrs, f-vf.....	Photo Online 2436
45	★	21/273,etc: including Jubilees 10¢, 15¢, 50¢, Leaf, Admirals cpl, Scroll cpl incl 5¢ booklet pane, Arch cpl, Airs, Special Dels, appears mostly f-vf	Photo Online 2904
46	★	30/227: 54 mint mostly different including Small Queen (Ottawa) 3¢ strip of three and 10¢, 10¢ Numeral, Scroll cpl, 50¢ Grand Pre, \$ Parliament light toning, 1935 Maple Leaf, clean and f-vf.....	Photo Online 2433
47	★	70a/262,F2c,F3: 16 items with IMPERFORATE PAIRS including 5¢ Leaf, 10¢ Cartier dist gum, 5¢ Registered (separated, creased), 1¢ Princess Elizabeth IMPERFORATE VERTIALLY , 12¢ Historical, 20¢ Harvesting, 5¢ 1935 Maple Leaf, Admiral Lathwork, Broken X, Weeping Princess, \$ Destroyer block of 4, 8¢ Registered small tear, appears clean and f-vf. Inspect. Est. 1500+	Photo Online
48	★	35/273: Over 150 mostly different blocks of 4 or larger incl Leaf, Numeral, Admirals, Confederation, Historical, Scroll to 20¢, Arch to 12¢, Medallion, 1935 Maple Leaf cpl, War cpl, Peace cpl in plate blocks, etc, many with at least two nh, f-vf	Photo Online 5773

49	★O	8/653,etc: Collection of over 600 diff 1857 to 1974 incl ½d (faulty), 12½¢ Large Queen (faulty), Admirals cpl, Scroll to \$1, cpl Arch, 1935 Maple Leaf, Pictorial, War and Peace issues, Airs, Special Delivery, War Tax, plus Dues, etc, some earlier faulty, much is clean and f-vf	4798
50	★O	Accumulation of mint and used 1850s to 1970s incl Pence, Large Queens, Small Queens, Jubilees up to 50¢, Leafs, Numerals, Quebec, Admirals, BK3e, blocks, singles, sheets, Newfoundland, over \$100 in Canada face incl \$ vals. Plus one binder of unsorted worldwide. Earlier condition a bit mixed appears mostly f-vf. Inspect. Huge cat val. Inspection a must. Est. 3000+.....
51	★O	Couple hundred better 1859 to 1940s, mostly nh, 14, 14 and 18 all used, a few Large and Small Queens, Maps, few Edwards, good Admirals, singles and blocks, with BOB and numerous revenues, mostly f-vf. Inspect. (Will Cat over \$3000).....
52	★O	Accumulation 1903 to 1951 of over 300 mint and used with over 35 Edwards, over 15 Tercentenary, over 110 Admirals with War Tax including MR2C, over 20 Scroll including 10 Bluenose, 173i with missing spire, MR6 mint paste-up single, many \$ values, duplication, mostly f-vf. Inspect.....	1587
53	★O	Collection of mint singles, blocks, and multiples from Maps to Peace issue many are nh, plus sparse Newfoundland collection and accumulation of used. Inspect. Est. 400+
54	★O	4/310: Collection of over 240, with Cents, Large and Small Queens, Jubilees mint complete to \$1 and \$2 with roller cancel, mostly used to Jubilees and mostly mint after Scroll and Arch 50¢ and \$1 used, fairly complete, appears f-vf. Photo Online	6801
55	★O	Balance of a consignment in two cartons with remaindered collections, hundreds of mint in glassines, with mostly George V to 2000s, some earlier including \$ mint and used vals, duplication, appears mostly clean and f-vf. Inspect. Est. 750+
56	★O	Good starter collection 1859 to 1980 of hundreds of mostly mint and earlier with high vals used in Lighthouse hingeless album, fairly complete 1950s on, plus some Elizabethan plate blocks, and a bit of Newfoundland, mostly clean and f-vf. Inspect. Est. 250+
57	★O	14/281,etc: Collection of 250+ mint and used in Schaubek hingeless album, incl Cents, Large Queens, 50¢ Widow weed mint, Jubilees, Edwards, Admirals and George V \$1 sets, earlier used, Jubilees on mostly mint with high vals usually used, 1950s to 1988 not counted, much is nh, appears mostly f-vf... ..	4737
58	★O	14/323,etc: Stock book with over 1100 mint and used, neatly organized and identified, with Cents, Large Queens, 50¢ Widow weed mint, Jubilees, Admirals, some George V \$ vals, BOB, mostly f-vf. Inspect.	7532
59	★O	14/281,etc: Collection of over 325 mostly mint some earlier used with Cents, Small Queens to mint 20¢, Jubilees mint to 50¢, Edwards incl 7¢ mint block of 4 nh and 10¢, Quebecs cpl mint, Admirals cpl mint incl coils, Scroll mint cpl, Arch mint cpl, Air, Special Dels, Dues, 2¢ and 8¢ Registered mint War Issue OHMS perf Officials, some earlier with minor faults, appears mostly f-vf	9841
60	★O	15/411,1407ai,etc: Balance of a collection with 5¢ Beavers two with imprints, Admiral, Scroll and Arch cpl, \$1 Fish PB, \$1 Totem and \$1 Export matched set, Officials including 5¢ George VI with MISSING PERIOD , plus some Provinces, etc, mostly clean and f-vf	Photo Online 4138
61	★O	Over 300 mint and used with PROOFS , Pence, Cents, Large Queens mint, Small Queens mint incl 1¢ counter strip of 5, 10¢ (3), 20¢ block of 6, 50¢ block of 4, Jubilees incl \$2 with mint, maps, Admirals, 10¢ Mt Hurd pair IMPERFORATE vertically, 5¢ Medallion IMPERFORATE PAIR , GV \$ vals, blocks, coil strips, booklet panes, Plate blocks, Lathwork, War Tax, O.H.M.S. ovpts, Nova Scotia, appears mostly clean and f-vf, much is nh. Inspect. Est. 6000+	Photo Online
62	★O	Balance of a consignment, mostly Small Queens to 1990s, with mint and used, incl unused Jubilees to \$1, sorted in glassines, clippings, Annual collections, booklets, over \$300 in mint face val, framed CPC items, duplication, quality a bit mixed, mostly appears f-vf. Inspect. Est. 500+
63	★OP	Approx 500 mostly mint with Pence, Cents, Small Queens incl 6¢ red brown block of four, Quebecs, Admirals incl 10¢ bistre brown, 20¢ block of four, coils, booklet panes, MISPERFS, Dues, Special Dels, Officials, Plate blocks, varieties, Revenues, Newfoundland with Pence used, Caribou, ½¢ Royal Family PLATE PROOF of four, Dues, etc, mostly clean and f-vf, many are nh. Inspect. Est. 3500+
64	★O☒	Accumulation with 2 Harris albums like new, 1850s to 2013, hundreds of covers, some 1930s and commercial usage, Easter Seals incl cpl sheets, on and off paper mostly modern, etc, appears mostly f-vf. Inspect. Est. 200+
65	O	Massive accumulation of used, with a few collections 1850s to 1980s, much in glassines, on album pages, envelopes and loose, with perfins, precancels, BOB, revenues, Newfoundland, cancels, some on-paper mixtures, disorganized so inspection necessary, generally f-vf. Est. 600+
66	O	A hoard of thousands of used, in blocks of four or larger multiples, mostly from 1950s onwards, incl \$1 Olympics sheets of 8, (X20 cv \$480), 1992 Hologram sheets, with other better items, some duplication, mostly f-vf. Inspect. Est. 300+

67	O	A mint and used remaindered accumulation including Provinces mostly Admirals onwards, in blocks and singles, mainly f-vf. Inspect Est. 200+
68	O	Over 90 used with 29 Jubilees, 38 Numeral, 19 Leaf and 5 Map stamps, Jubilees include 3 of the \$2, 1 with 'Union Strn' roller cancel, other two with smudge, Numeral and Leaf include all values, cancels include squared circle, flag, few cds, precancels, etc, f-vf. Inspect.....	2495
69	O	Accumulation of thousands of used mostly 1950s on but many earlier in two cartons, lots of duplication, appears mostly f-vf. Inspect. Est. 150+
70	O	34/95: Stock of over 4300 used, with Small Queens to 50¢, Jubilees to 50¢, Leaf cpl, Numeral cpl, Edwards cpl, Map, duplication in low vals, with cancels, shades, perms, papers, etc., some quality issues, but appears mostly clean and f-vf. Inspect.....	10475
71	O	Off-paper sorted in glassines with Centennials to \$1 (1.45 kg), Caricature / Landscape to 50¢ (800 gms), with 465B (233), coils, strips, Precancels, papers, cancels, etc, mostly clean and f-vf. Est. 100+
72	O	4/159: Thirty used incl four imperforate Beavers, one badly oxidized not in totals, Large Queens, Jubilees with 5¢ block of 4, Bluenose with small thin, appears mostly f-vf	Photo Online 1508
73	O	34/302: Stock of many hundreds of used, Small Queens to \$1 Fish, with many cancels, usual mixed quality, duplication to about 20 each, but appears mostly f-vf. Inspect.....	3282
74	O☒	Hundreds of mostly used Jubilees to 1940s, plus FDCs to 2000s, some duplication, earlier quality a bit mixed, appears mostly f-vf. Est. 100+
75	O☒	Thousands of mint and used 1890s to 1970s, with Leafs, Numerals, Edwards, George V incl \$ vals, mostly used pre Elizabeth, great lot for cancels, quality mixed, much appears f-vf. Inspect. Est. 250+..
76	F	DIE PROOF FORGERIES AND FANTASIES: 19 different including Pence, Cents, Large Queens, Bluenose, Newfoundland, etc, interesting. Inspect. Est. 250+	Photo Online
77		EPHEMERA: Over 50 items including 1945 Wine Ration coupon book, 1943 Commercial 'C' gasoline license, 7 Ration books (1-5), Meat ration tokens, FWS7-14 on card, German WW II revenue card with stamps, 2 air route postcards, cheques with revenues, blotters, etc, needs inspection, f-vf. Est. 130+..
78		EPHEMERA: Accumulation of a few 100 cheques mostly Tottenham related, pictures (personal, scenic), cigarette and cocoa cards, baseball and hockey cards, Blue Jays, military, transportation, advertising pieces, 'Life's Picture History of WW II, comics and more, eclectic mix is an understatement. Inspection necessary, f-vf. Est. 200+
79	O	R.P.O.s: Over 1500, 764 different, neatly identified as to Train #, mostly Small Queens to 1930s, with Ontario, Quebec, Newfoundland and Maritimes, many SON, clean and f-vf. Inspect. Est. 350+
80	O	TOWN CANCELS: Collection of many hundreds of ONTARIO, some BC and NB, neatly sorted and identified, mostly Edwards to 1980s, some earlier, many SON cancels, mostly f-vf. Inspect. Est. 200+

POSTAL HISTORY

81	☒	1805/1868 Eight stampless covers, one with red Quebec crown cancel, one with black straight line Montreal, one with red straight line 'Money Letter', one with decorative front, various other markings, couple to and from Hon. D.B. Papineau, f-vf. Inspect. Est. 250+	Photo Online
82	☒	1843/1861 Six covers including 1843 'FREE' Money letter, 1843 to New York City, 1846 Sherbrooke, 1846 Niagara, 1850 Money letter and 1861 Quebec Grand Trunk Rail RPO, most with additional markings, generally good condition, appears f-vf. Inspect. Est. 200+	Photo
83	☒	1820s/1940s Accumulation of covers, folded letters, etc, incl straight lines, Paid and Unpaid, South-Gower U.C. 23 May 1842 ERD, Colborne Oval, Canadian Legion Field Post 1941, Crown Lands Dept Quebec, 3d Beaver faulty, quality a bit mixed, plus some GB etc. Inspect. Est. 150+	Photo Online
84	☒	1840 Stampless folded letter from Church Mission(?) Institution, Islington, UK, letter dated May 27 1840 to 'His Reverend J Smithurst Red River Settlement N W America', Smithurst was born Sept 9, 1807 in Lea, UK and died Sept 1867 in Elora, he was ordained as a priest May 26 th , 1839, the letter is cross written pertaining to church issues, f-vf. Est. 200+	Photo Online
85	☒	FOREIGN DESTINATIONS: 14 covers and postcards (+1 front) 1882 to 1948 to 6 different countries, of note 2, P4 postcards, 1882 Quebec to Germany and 1890 Barrie to Turkey in Asia, 1929 cover Kitchener to Switzerland will full back advertising 'John Forsyth Ltd.', couple with corner advertising, some with condition issues, f-vf. Inspect. Est. 180+	Photo Online
86	☒	FOREIGN DESTINATIONS: Nine covers and postcards 1822 to 1943, 5 to UK and 4 to US, highlights include 1822 'Ship Letter' St. John to London, 13 Aug 1938 RMS Nascope. 1898 postcard to stamp dealer on The Strand, 1939 Royal Visit FDC with Crosby cachet to US, censor, various cancels, other markings, f-vf. Inspect. Est. 130+	Photo Online

- 87 ☒ **1852/1944** Fifteen covers / postcards plus a front, with 3 SP 1852 Montreal cover with black circular **1/- 4d Cys**, 18(?) FE 62 to Goderich with 1¢ Victoria, 1907 cover from UK with 2¢ Due, unused 1902 'Nova Scotia Prov Exhibition', advertising with 'Babcock & Wilson' etc, f-vf. Inspect. Est. 180+ .. Photo Online
- 88 ☒ **1848/1950s** A couple hundred covers includes about 15 stampless with various markings, some Victorian, a few with contents, also '28 JL 60' **B&L HR**, RR-5 (RF235-Ludlow), a few mourning and O.H.M.S., many corner advertising, few censored and military, some condition issues exist, f-vf. Inspect. Est. 400+.....
- 89 ☒ **1833/1990s** Accumulation of over 190 covers, mostly 1940s and earlier, 8 stampless, 3 Map issue, 2 Eastern Arctic Mail, over 95 FFCs with a few Newfoundland, mostly 1920s to 1940s, over 65 Small Queen covers with various cancels and markings, some condition issues on earlies. Inspection recommended, additional value to be found, f-vf. Est. 250+
- 90 ☒ **PRISONER OF WAR:** Five covers, 3 Hong Kong camps, 1 Japan, 1 Germany (with letter), 1 Middle East Forces and 1 in GB, stunning array of markings and notations, 'Postage Free, Prisoner of War Mail, c/o Japanese Red Cross, etc, one taken December 25, 1941, f-vf. Inspect. Est. 250+Photo Online
- 91 ☒ **WW I:** Thirty-five covers / postcards most to Canada, variety of Field Post Offices incl 6P, 2A, D19, 169, 188, etc, 4 silk postcards, 2 used, 1 with enclosure, 1916 Canadian Expeditionary Force, 1917 Canadian Division Cyclists letterhead, various censor markings, f-vf. Inspect. Est. 250+.. Photo Online
- 92 ☒ **WW II:** Annotated collection of over 30 covers many from 'W force (Gander and Goose Bay), 'Y' force (Jamaica) and 'Z' force (Gibraltar), includes 1943 letter from Japanese Internment camp in BC, various forces, Winnipeg Grenadiers, Rocky Mountain Rangers, RCAF 'Y' Wing, etc, wide variety of censor markings, f-vf. Inspect. Est. 650+ Photo Online
- 93 ☒ **WW II:** Collection of over 30 covers/air letters from various ships, Bytown, Hunter, Avalon, Red Deer, etc, many military camps, various censor and military PO markings, one from Guantanamo Bay, couple from 'CanLoan Scheme', f-vf. Inspect. Est. 500+ Photo Online
- 94 ☒ **WW II:** Over 65 covers, postcards and ephemera, wide array of censors, markings, field post offices, different branches, regiments, etc, cover Scotland to Palestine, RCAF serving in North Africa with GB and US postage, war ration books, most postcards unused, f-vf. Inspect. Est. 150+

SHIP AND PAQUEBOT MARKINGS, ETC

- 95 ☒ **1835:** Folded cover carried privately by ship to Quebec and rated manuscript '2½' (Captain's gratuity) with very fine strike of small single line **SHIP LETTER QUEBEC CROWN OVAL** (CS type VI) in red alongside Quebec 13 JY 1835 cds, both struck on arrival, slight address panel lightening and refolded at outer edges to hide edge soiling, still a rare and most presentable cover. Est. 250+.....Photo
- 96 ☒ **EASTERN ARCTIC MAIL SERVICE:** 1932 S.S. Ungava (Ludlow S-173c, RF 500), 9 Jul 1932 Lake Harbour NWT and 1934 S.S. Nascopie (Ludlow S-173b, RF 500) 18 Aug 1934, date one day before ship arrived in Churchill, stuck in ice for 3 days, commercial use, f-vf. Est. 250+.....Photo
- 97 ★O☒ **FLAG CANCELS:** Thirty-five covers and many stamps exhibiting various flag cancels, many FDCs of 1937 Coronation with George VI issues, all posted May 10th to 15th, wide variety of cachets some scarcer, corner advertising, commercial usage, Vancouver, Victoria, Winnipeg, Windsor, Toronto (Die 1 & 2), Montreal (Die 1 & 2) and Quebec City, f-vf. Inspect. Est. 130+
- 98 ★O☒ Over 20 covers and various stamps demonstrating the various forms of 'Blackout' cancels used in Canada, with censored, hub less, registration mark, some corner advertising (colour and black and white), 1 cover to West China, rest within Canada, interesting lot. Inspection warranted, f-vf. Est. 130+
- 99 ☒ Over 45 Victorian covers, private postcards and postal stationery, 1861 to 1910, majority with Numeral issue, many corner advertising, few from Yukon Territory, six foreign destinations, variety of cancels most duplex, 2 'IOOF", couple RPOs, additional markings, f-vf. Inspect. Est. 250+
- 100 ☒ Over 70 covers and postcards 1930s to 1960s with bulk being 1930s to 1940s, with variety of cancels including duplex, slogan, etc, markings, rates, registered, foreign destinations, many corner advertising, Airs, FDC with some cachet variety, f-vf. Inspect. Est. 200+
- 101 ☒ Over 100 covers and postcards 1879 to 1946, Canada wide interest, with FFCs (17), Airs, corner advertising, military, few Newfoundland, additional markings and cancels, with 1879 Toronto Reaper & Mower Company advertising cover, 1882 Mourning cover to Edinburgh, 1892 cover from Ida to Lindsay with 5¢ Registered, etc, f-vf. Inspect. Est. 200+
- 102 ☒ **FFCs and POSTAL STATIONERY:** Over 50 FFCs, 31 within Canada, 14 to UK, 7 to US and 3 to Belgium, 45 unused postal stationery with envelopes, postcards, wrappers, etc, many Victoria, 12 meter cancels examples, interesting variety, f-vf. Inspect. Est. 150+
- 103 ☒ A few hundred covers Elizabeth to 2000s, many advertising, commercial mail, registered, events, Postage Due markings, various sizes of envelopes including oversize, f-vf. Inspect. Est. 200+

- 104 ☒ **1841/1949** Over 125 incl Stampless, Large and Small Queens incl strip of 4 x ½¢, 12 Jubilees incl multiples up to 8¢, flag cancels, Leaf, Numerals, Maps, multi-colour franking, FFCs, over 50 FDCs incl C3 (4 different cancels), War Issue on different covers with different Cachets, Peace cpl on one and on separate covers, 202, 208, earlier condition a bit mixed, much is clean and f-vf. Inspect. Est. 750+.....
- 105 ☒ Accumulation of mostly covers, FDCs and postal stationery, over 35 FDCs incl 2 of 302 with different cachets, also 262, 273 and a few Newfoundland, over 100 military, many modern, about 250 postal stationery items, used and unused, envelopes, postcards, letter cards, advertising, etc, 15 WWII ration books, Canada Post test mail, f-vf. Inspect. Est. 325+.....
- 106 ☒ Over 30 covers mostly Canada, 1871 to 1958, mostly pre 1940, cancel interest with with flag and 2, squared circle (Lindsay, 1 registered), Quebec RPO, many advertising, some with additional markings, 1939 loor cachet, 4 Foreign, GB, France, India and Honduras, f-vf. Inspect. Est. 150+
- 107 ☒ About 50 covers and postcards, 1902 to 1999 mostly pre to 1940, 9 Royalty postcards including George VI FD postcard, some unused, 21 FFC from 1920s to 1930s, some with additional markings and signatures, 1989 Regimental FDC with inscription block, etc, f-vf. Inspect. Est. 130+
- 108 ☒ **CANADIAN RADIO STATIONS:** Over 150 covers 1950s to 1960s mostly metered with various mostly Canadian radio station return logos, many with metered slogans, f-vf. Inspect. Est. 100+
- 109 ☒ **WESTERN CANADA POSTMARKS:** Over 90 covers and postcards 1930s to 1970s mostly 1930s and 1940s, with 3 RPOs, 4 from Yukon, 1925 Canadian Carbonate Ltd, 1929 Maclin Motors with full back Ford Motor Co advertising, 1969 CPR Ticket envelope, etc, foreign destinations, few FDCs, cancels, f-vf. Inspect. Est. 300+
- 110 ☒ **POST CARDS:** About 90 unused Canadian postcards, mostly black/white, over 35 of Calgary with buildings and events, Yukon/Alaska Highway (10), 'Missions D'Extreme Nord-Canadienne', patriotics, # of private postcards, various producers PECO, Pearson's, H. Enida Olive, F.E. Osborne, etc, few with condition issues, most f-vf. Inspect. Est. 150+
- 111 ☒ **POST OFFICES:** (60+) and Oshawa (55+) colour and black and white post cards, small and larger locales with Deseronto, Shelburne, Blind River, Renfrew, etc, Oshawa with various locales and communities including Brechin, Cedardale, South Oshawa, etc, f-vf. Inspect. Est. 150+
- 112 ☒ Over 1000 post cards, a few Victorian, many Edwards, Admirals and up to 1970s, scenic, seasonal, humorous, military, etc, plus postal stationery, used and unused, some earlyies, mostly 1970s, some condition issues, f-vf. Inspect. Est. 200+
- 113 ☒ **BERLIN POSTMARKS:** Over 40 mostly postcards 1892 to 1917 almost all with Edward and Admiral 1¢ issue, couple of covers with Victoria issue, duplex, slogan, etc, schools, parks, fire stations, few seasonal, other markings, all appear to be different, f-vf. Inspect. Est. 150+
- 114 ☒ **PATRIOTICS:** Over a hundred 1906 to 1942 mostly used to 1920, few US and GB, mix of small and larger locales, Tichbourne, Britannia, Beaumaris (all ONT), Murray Bay (QC), flags, royalty, military leaders, Laurier (Premier and Prime Minister), Borden (Minister of Militia), slogan, duplex, etc, f-vf. Inspect. Est. 200+
- 115 ☒ **FIRST DAY COVERS:** Collection of thousands of mostly George VI 1937 Coronation on in two cartons, many with **CACHETS** incl Art Craft, Grover, JCR, Jacobi, Rose Craft and other unknown, with singles, blocks, plate blocks, combo covers, etc, plus Philatelic Exhibition covers, some un-cacheted, some with light water staining, quality mostly clean and f-vf. Inspect. (Over 16kg). Est. 750+
- 116 ☒ Over 500 FDCs 1947 (Citizenship) to 1996 (Miners) issue, singles, blocks, sets, souvenir sheets, with various cachets including Canada Post, Rosecraft, House of Commons and a few others, clean, f-vf. Inspect. Est. 200+
- 117 ☒ Over 500 FDCs 1935 to 1990s, with 1935 George V Silver Jubilee on 3 FDCs, Newfoundland 1935 Silver Jubilee on 1 cover, over 250 Colorano silks, over 90 Schering all English, over 40 Cole covers, few JCR, Ginn, over 50 'NR' covers, other cachets, some duplication, clean, f-vf. Inspect. Est. 350+
- 118 ☒ A near complete collection of many hundreds of Canadian FDC, mostly unaddressed, from 1986 to 2014 in nine albums, with singles, sets, mini-sheets etc, with some higher value up to \$10, clean, mainly f-vf. Inspect. Est. 250+
- 119 ☒ Over 180 FDCs, 1954 to 1971, in two albums and loose, incl Cachetcraft, Jackson, Chickering, Stephen Andersen with cpl set of Centennials, mostly f-vf. Inspect. Est. 180+
- 120 ☒ Hundreds of FDCs late 1960s to 1998, much of later issues are still in the original packaging sent out by Canada Post, earlier period condition is mixed, otherwise fine. Est. 180+
- 121 ☒ Over 800 covers including over 700 FDCs 1951 to 1987, mostly Canada Post cachets but did note a number of Cole and 'NR' cachets, bit of postal stationery and postcards, also over 100 Automotive corner advertising covers and fronts many from BC, f-vf. Est. 150+

- 122 ☒ Over 440 FDCs 1950s to 1970s with bulk of the lot being Rosecraft cachets but noted over 7 other including Jacoby, CRC, O'Neill, ANW, 1 CPO and a few Type 4 red Maple Leaf covers, 1 Hand drawn 459 FDC, 6 federal Wildlife FDCs, some duplication, eclectic mix of material, f-vf. Inspect. Est. 200+
- 123 ☒ Hundreds of 1940s to modern, including Cachets with Art Craft, Artmaster, Cole, Fleetwood, Rose Craft, etc, some unaddressed, mostly f-vf. Inspect. Est. 250+ Photo Online
- 124 ☒ **POSTAL STATIONERY:** Over 65 Canada and 14 Newfoundland, 1873 to 1960s most 1920s and earlier, about 2/3 used, uprated foreign destinations(Germany), variety of cancels, additional markings, P17 with Indian Head, ASSA and EN25 with Lebret, ASSA among many better, few Letter cards, needs inspection, f-vf. Est. 170+
- 125 ☒ **P1:** 1871 blue postal card with clear Hamilton 3 Ju 71 duplex '5' grid cancel to Chatham, ON, reverse has additional blue oval 'Medical Registration office' 3 JUN 1871 province of Ontario date stamp, being 'Earliest Recorded Date', over all ageing, couple of bends, rounded corners, still, fine. Est. 250+ Photo

UCS Cat Val

PENCE ISSUES

- 126 ★O 1,4(4),7,8: seven different including 3 pence on laid paper, four 3 pence on wove paper, one unused and repaired, half pence with pen cancel partially rubbed out, 10 pence, repaired, all with faults, appear mostly fine. Est. 300+ Photo Online

PENCE PROOFS

- 127 E **BRADBURY, WILKINSON & CO.: VICTORIA HEAD, ONE PENNY PLATE ESSAY**, GREEN, on hard bond paper, vertical crease still appears very fine. (Minuse & Pratt E-Bb). Est. 300+Photo
- 128 E **ONE PENNY: VICTORIA HEAD PLATE ESSAY** on wove paper in REDDISH-BROWN, very fine. (Minuse & Pratt E-Ba). Est. 300+Photo
- 129 E **ONE PENNY: VICTORIA HEAD PLATE ESSAY** on wove paper in GREEN, very fine. (Minuse & Pratt E-Ba). Est. 300+Photo
- 130 E **SIX PENCE: VIKING HEAD PLATE ESSAY** on wove paper in GREEN, very fine and scarce. (Minuse & Pratt E-Ca). Est. 750+Photo
- 131 O 1: **THREE PENCE ON LAID PAPER:** RED, laid lines, target cancels, good to large margins, finePhoto 800
- 132 O 1: -RED, laid lines, large margins all around, expertly repaired thin, still appears very finePhoto 800
- 133 O 2: **SIX PENCE:** SLATE VIOLET, strong laid lines, full to large margins, SON target, repaired, appears very fine, 2003 Sismondo CertPhoto 1000
- 134 F 3F: **TWELVE PENCE:** BLACK, four FORGERIES or FAKES, a single, one on piece and two on folded letter, great space fillers. Est. 150+Photo
- 135 P 3Pi: **TWELVE PENCE: PLATE PROOF** in BLACK, with vertical CARMINE specimen on india paper on card, diagonal crease, still appears very finePhoto 2500
- 136 O 4/12: Six 3 Pence imperforate, two 6 Pence, three Half Penny and two Perforated 3 Pence, all faulty / cut into, oxidized, pen cancel removed, many good space fillers. Inspect. Est. 100+ Photo Online

THREE PENCE ON WOVE PAPER

- 137 O 4: **THREE PENCE: DEEP RED**, vertical pair, bottom stamp full to large margins, very fine, 2018 Montbas CertPhoto 450
- 138 O 4: **THREE PENCE: RED**, full to large margins, plugged target, very finePhoto 300
- 139 ☒ 4: -faulty pair on folded cover cancelled with targets, from Kingston 8 DE (?) to New York with Canada in arc exchange marking in same colour, filing folds, still appears fine. Est. 200+Photo
- 140 ☒ 4a:-**BROWN RED**, clear to bottom margin copy with neat target, oxidized on folded cover with red two ring Picton U.C. 22 DE 1852 to Kingston, filing fold, appears very finePhoto 300
- 141 ☒ 4c: -on **SOFT RIBBED PAPER**, large to into at bottom, tied to small morning cover by square grid cancel, Chatham U.C. 13 JA 1858 split ring receiver on reverse, toning due to wax seal on back bleeding through, otherwise fine Est. 150+Photo
- 142 O 4d: -on **THIN PAPER**, SCARLET VERMILION, clear to huge margins, target cancel, almost very finePhoto 150
- 143 O 4d: -large to showing part of next stamp at UR margins, neat target cancel, very fine.....Photo 300
- 144 O 5b: **SIX PENCE:** GREENISH GREY, large margins to just into at UR, BLUE cancel, fresh, fine...Photo 800
- 145 O 7: **TEN PENCE:** BLUE on THIN PAPER, with close to good margins, with crease to UL corner, otherwise fine.....Photo 1200

146	☒	7: - with minute nick at top otherwise clear to large margins, horizontal crease at filing fold, tied to folded cover to SCOTLAND , small Toronto 6 DE 58 cds and red PAID LIVEERPOOL BR. PACKET 19 DE 58 2 C cancels on front, Greenock B 20 DE 1858 receiver on reverse, appears finePhoto	3000
147	O	7a: BLUE on THICK PAPER, used, clear to very large margins, tear at left and thin, appears very finePhoto	1500
148	O	7a: - used, full to large margins, light horizontal crease, appears very finePhoto	500
149	P	8P: HALF PENCE: PLATE PROOF in ROSE on india paper, very fine.....Photo	350
150	O	8: - ROSE, into at UR to large margins, with SON 4-ring-17, small tear at left, appears fine.....Photo	500
151	☒	8: - lightly creased before adhered, tied by pen cancel to printed form (55.9x41.9 cm) re "Questions for the Examination of Teachers" from County of Brant, with over 175 questions, folded, Dundas 21 ? 1857 back stamp, scarce PRINTED MATTER RATE , edge faults, still fine.Photo	1100
152	☒	9: SEVEN AND A HALF PENCE: GREEN , large to into UR margins with target cancel, Gananoque 24 MR 1852 on cover to SCOTLAND with ms "per S. S. North American Mar 27/58", re straight line BY CANADIAN PACKET, and PKT LETTER PAID LIVERPOOL AP 8 *58A, cover with corner and back faults and some toning still appears fine.Photo	6000
153	O	9ii: - with MAJOR RE-ENTRY (pos. 7), used, just into to clear margins, very good.....Photo	1500
154	O	10: SIX PENCE: REDDISH PURPLE on THICK SOFT PAPER, with 16 in circle of diagonal bars (D&S 70), faulty and thinned, good space filler. Est. 350+Photo
155	☒	10: SIX PENCE: REDDISH PURPLE , clear to full rough margins, tied to cover by 4-RING-21 cancel, with Montreal LC 26 JY 1858 to Parkman in Boston Mass (*USA*), no receiver on reverse, fine. 1984 Greene Cert stating original Canada Specialized number 6ePhoto	10000
156	O	11: HALF PENNY PERFORATED: ROSE , just into to good margins, light cds, a few blunt perfs at UR and LL otherwise very good, 2020 Greene CertPhoto	500
157	O	12: THREE PENCE PERFORATED: RED , with 4-ring-11, thin at top and missing perf, appears fresh and finePhoto	300

FIRST CENTS PROOFS

158	P	14P: ONE CENT: PLATE PROOF , DEEP ROSE on india on card, LR corner copy, very fine.....Photo	250
159	P	14Pi: - PLATE PROOF , ROSE with vertical SPECIMEN ovpt, on india on card, light bend LL otherwise very finePhoto	250
160	P	15P: - PLATE PROOF , VERMILION on india, very finePhoto	300
161	P	15P: - PLATE PROOF , VERMILION on india on card, very finePhoto	300
162	P	16Pi: TEN CENT: PLATE PROOF just clear margins, creased, appears fine.....Photo	450
163	P	20TC: TWO CENT: PLATE PROOF , DARK ROSE, on india on card, with minute scuff below design, still fine.....Photo	300
164	P	20TC: - PLATE PROOF , DARK ROSE, on india on card, showing DASH IN LOWER 2 variety, finePhoto	300
165	P	20TCii: - PLATE PROOF , GREEN, pair on india on card, very finePhoto	800

FIRST CENTS ISSUE

166	O	Accumulation of mostly 1¢ and 5¢ plus a couple imperf 3 pence and perforated 3 pence, cancels with target, numeral, duplex, etc, couple with readable dates, with shades, etc, few not counted, f-vf.	2720
167	O	14-15,17-19: 1¢ (6), 5¢ (6), 10¢ (30), 12½¢ (3) and 17¢ (3), all used, many appear unused, one 12½¢ re-perfed and re-gummed, some small faults, appears f-vf. Photo Online	1220
168	O	14/20: Over 130 used with 1¢ (25), 5¢ (59), 10¢ (22), 12½¢ (15), 17¢ (11) and 2¢ (3), cancels including target, 4-ring, some cds, imprint copies, shades, etc, quality a bit mixed, many still f-vf.... Photo Online	7060
169	☒	14,15(2),17(2): Five covers, 1¢ with Montreal 7 AP 63 duplex drop letter, 5¢ folded promissory note with Kingston 3 MR 66 to Toronto, 5¢ HUNTER, DUFFY & JOHNSON BOOTS & SHOES advertising cover, slightly reduced with Montreal 28 NO 67, 10¢ with Dunham 23 MY 1863 C.E., 10¢ with Wyoming 27 MY 63 C.W. to New York, some toning and corner faults, appears fine. Est. 150+ Photo Online
170	☒	15: FIVE CENT: VERMILION , 3 covers 1859 to 1866, 22 AU 1859, 2 nd month of use, Waterdown split ring and target, 1864 Montreal Berri duplex cancel, back cpl advertising, 'R.C. Jamieson & Co' forwarded cover, torn and scruffy, 1866 Dundas duplex with Hamilton split ring on reverse. Inspection warranted, f-vf. Est. 150+Photo

171	☒	15ii,17b: 10¢ brown Consort (PO 6B – brownish sepia) and 5¢ orange Beaver (PO 6, bright orange red), both perf 11¾, cancelled by matching pen strokes (not tied) and used on manila envelope from Lonsdale 27 DE '61 (manuscript date) paying the 15¢ REGISTERED RATE TO THE USA (10¢ postage, 5¢ registration) with 2 different straight line REGISTERED handstamps (in red and black) on front, Shannonville 27 DE and Kingston 30 DE transits on back, reduced at left to open, ONE OF ONLY SIXTEEN SUCH FRANKINGS RECORDED . Est. 250+Photo	
172	O	16: TEN CENT: BLACK BROWN , (PO 1A), perf 11¾, faulty copy, great space filler.....Photo	1250
173	☒	16: -(PO 1A), perf 11¾, perfs well into stamp, many perf disks still attached, tied to cover by target cancel with Granby C.E 25 JY 1859 to Willsboro Centre, Montreal LC 26 JY 1859 receiver on reverse, some toning, still RARE. 2002 Greene Cert.....Photo	9000
174	☒	18a: TWELVE AND A HALF CENT: BLUE GREEN , perf 11¾, tied to cover by Montreal 9 NO 60 duplex to Manchester *G*Q, with red PAID LIVERPOOL COL PACKET 25 NO 60 2A on front and Manchester 26 NO 60 receiver on back, some toning on cover at LR otherwise clean and fine. Est. 150+Photo	
175	☒	19i(2): SEVENTEEN CENT: PRUSSIAN BLUE Cartier (PO4 – Dark Prussian Blue), perf 11¾ in VERTICAL PAIR tied by two matching Montreal 11 JY '62 Berri duplexes to DOUBLE CANADIAN PACKET RATE TRANS-ATLANTIC folded letter to FRANCE , London 23 JY receiver and circular PD, both in red plus Calais 24 JY transit on front, Tonnay-Charente 25 JY arrival on back, two light vertical file folds (one affects left stamp), still fine and VERY RARE, one of ONLY EIGHT ALLAN LINE DOUBLE FRANKING COVERS RECORDED TO FRANCE (only two have vertical pairs), this being the second earliest known. Est. 1250+.....Photo	

LARGE QUEENS

176	★	21-22,24-26iv: ½¢ to 5¢, fresh unused, all with minor faults, ½¢ og, 1¢ no gum, 2¢ and 3¢ regummed, 5¢ perf 11½x12 with partial streaky og, appear fresh and fine Est. 500+Photo	
177	★O	Fifty-one mostly used with 6¢ on small cover, wide variety of cancels including cork, crown, roller, duplex, etc, shades, perfs, some not counted, appears mostly f-vf.	2365
178	★O	21/30: ½¢ to 15¢, 32 mint, ½¢ (10), 1¢ brown red (2), 1¢ yellow orange (2), 2¢ (3), 6¢, 12½¢ (2) and 15¢ unused and used, many ½¢ with og, some others with questionable gum, mostly appear unused, some with small or minor faults. Inspect. Est. 500+ Photo Online	
179	O	24-30: ½¢ to 15¢, 200 used with ½¢ (13) including SPUR and H SPUR varieties, 1¢ brown red (8), 1¢ yellow orange (15), 2¢ (25), 3¢ (49), 5¢ (6), 6¢ (25), 12½¢ (14) and 15¢ (45), with shades, Plates, papers, cds, 2-rings, etc, quality mixed, many small or minor faults, appears f-vf. Inspect.Photo Online	11400
180	P	22P: ONE CENT: BROWN RED, PLATE PROOF PAIR , on card in colour of issue, very fine.....Photo	1500
181	★	22: - BROWN RED, large part og, couple short perfs at bottom otherwise fresh and fine	Photo 800
182	★	22: - BROWN RED, og, small hr, fresh and fine	Photo 800
183	O	22,22a,22b,22ii: ONE CENT: Six used , with various varieties, including thin paper, Bothwell watermark, Ottawa AM SE 13 68 cds, Bothwell paper without watermark, couple small faults, one appears unused but repaired, appears fine..... Photo Online	740
184	☒	22,24: 1¢ brown red and 2¢ green, tied by neat matching grids to each other and attractive cover with Grand Lodge of the Order of British Templars, New Brunswick surrounding a THREE MASTED SAILING SHIP , illustration, used from P. O. SALISBURY 2 FE 1869 to St John, partial receiver on back, trimmed at right to open, a choice and very attractive DISPLAY ITEM. Est. 1100+Photo	
185	★	22b: - BROWN RED on THIN PAPER , og, horizontal crease and lightly toned UR, hr, otherwise appears very fine, 2018 Greene Cert	Photo 1000
186	★	22b: - BROWN RED on THIN PAPER , deep colour, og, hr, fine	Photo 1000
187	O	23,23a,23i,23iii: ONE CENT: YELLOW ORANGE , eight used, including yellow orange, yellow, deep orange, yellow last printing and thin paper, four with 2-ring cancels, fine.....Photo	1240
188	O	23: - YELLOW ORANGE, with SON 2-RING-3, fresh and fine. Est. 75+.....Photo	
189	★	23a: - DEEP ORANGE mint pair, og, perfs into at top, horizontal crease through both, hr, still vg, slight oxidization 2016 Greene Cert.....Photo	1800
190	(★)	23i: - YELLOW, (last printing), regummed, still fine, 2020 Greene Cert	Photo 850
191	O	24a,24b,25,27,28: TWO CENT: on Bothwell paper and crisp thin paper , 3¢ 6¢ and 12½¢ all used, couple short perfs otherwise mostly clean and very fine..... Photo Online	380
192	(★)	24b: - DEEP GREEN on crisp thin paper, one shorter perf, unused, but regummed, extremely fine centering, gorgeous. 2017 VGG cert.....Photo	2800

193	(★)	24b: - THIN PAPER, DARK GREEN, unused, fresh and very fine	Photo	1400
194	P	26P: FIVE CENT : OLIVE GREEN, PLATE PROOF PAIR on card in colour of issue, very fine	Photo	1500
195	(★)	26: - OLIVE GREEN, perf 11½x12, regummed, fresh and almost very fine	Photo	800
196	☒	26: - tied to registered cover to Gananoque, Toronto 22 OC 75 cds on front and REGISTERED same date cds' on back, 23 OC 75 Gananoque receiver, slightly reduced at top o/w fine. Est. 150+	Photo
197	☒	26: - tied to cover to SCOTLAND with Lakefield 10 JU 78 cds on front, and Montreal 11 JU 78 transit and Edinburgh 24 JU receiver on reverse, stamp over edge with perf faults and torn at bottom, otherwise fine. Est. 150+	Photo
198	☒	26: - tied to cover to SCOTLAND by Toronto 20 DE 75 duplex, ms Via New York, Edinburgh 1 JA 76 receiver on reverse, opening tears, perf faults, o/w fine. Est. 100+	Photo
199	O	26a: - OLIVE GREEN, perf 12, with partial cancel 22 ?P 76, very fine	Photo	1250
200	★	26iv: - OLIVE GREEN, perf 11¾ x 12, full og, hr, into at right, vg	Photo	900
201	★	28: TWELVE AND A HALF CENT : BLUE, dist og, light overall toning o/w fine. 2015 Greene Cert	Photo	1200
202	O	28b: - THIN PAPER, DEEP BLUE, seven copies used, quality mixed but most appear f-vf	Photo Online	525
203	P	29P: FIFTEEN CENT : BROWN PURPLE, PLATE PROOF on india, very light bend at top otherwise very fine	Photo	1000
204	(★)	29b: - RED LILAC, unused, couple shorter perfs, otherwise very fine	Photo	1200
205	☒	29b,37: - rich colour and tied along with 3¢ red Small Queen by matching cork cancels to large piece from Dunnville 17 MR 75 to Dublin, Ireland, went via Allan Lines 'Peruvian', leaving Portland 20 March and arriving Liverpool March 31, a TRIPLE 6¢ CANADIAN PACKET RATE MIXED ISSUE FRANKING , filing fold and small tear at right, otherwise very fine. Est. 1000+	Photo
206	☒	29e: - RED LILAC on THIN PAPER , first printings, two, with AMAZING DEEP RICH COLOUR, tied by large grids to DOUBLE WEIGHT cover (up to 1oz), no despatch cds but probably travelled on the Cunard ship 'Russia' (left New York May 27, reaching Queenston June 5), with red London PAID 6 JU 68 date stamp on front and same day London-W. receiver on back, there are a couple of tears (mostly on back), a most attractive, red ownership mark on back. Ex Jansen. Est. 1500+	Photo
207	O	29i: - PURPLE, twenty-three used, with shades, pair and strip of three, some with LL position dot, mostly f-vf	Photo Online	575
208	O	30: - GREY, ten used with various shades and cancels, many with Montreal LL position dot, condition mixed, appear fine	Photo Online	300
209	O	30c: - DEEP VIOLET , very thick white carton paper, centered, some nibbed perf tips and thin at right, otherwise fine	Photo	1000
210	O	30c: - very thick white carton paper, usual centering, fine. 2018 Greene Cert	Photo	1000
211	★	30i,iii: - SLATE VIOLET, top right corner BLOCK OF TEN (missing selvedge at right and over first two stamps), showing the PAWNBROKER VARIETY on the upper right stamp (pos 10), full og (naturally short-gummed at sheet edge at top) and bottom stamps and variety are NEVER HINGED , couple perf faults UL and couple stamps affected by rust spots on gum (not the variety), a very fresh and RARE POSITION MULTIPLE	Photo	4560
212	O	31: ONE CENT ON LAID PAPER : BROWN RED, with crisp laid lines and verger line, perfs just into design at right, 4-ring cancel, lower corner perfs creased otherwise fine, 2008 Greene Cert	Photo	1500
213	E	CANADA BANK NOTE ENGRAVING & PRINTING COMPANY : 35E-Aa: ONE CENT , DEEP YELLOW, engraved plate essay on india, left margin INSCRIPTION copy, very fine Est. 500+....	Photo

SMALL QUEENS

214	★	34/47,F3: Over 65 mint ½¢ to 50¢ including shades, printings, 8¢ Registered, quality a bit mixed, appears mostly f-vf, plus over 50 vals that appear unused not included in totals. Inspect. Photo Online	6150
215	★	34/46: ½¢ to 20¢, 5¢ no gum o/w og, some disturbed, couple perf faults, appears mostly f-vf.....	Photo 1685
216	O	Accumulation of over 570 including Widow Weeds (10), good portion is 3¢ issues, cancel collector will be interested as star, flag, etc, many with readable dates and towns, couple of private perfins(WJG), 34 offset, with shades, etc. Inspection necessary, f-vf. Est. 600+.....
217	O	Small Queens 1¢ (9) and 3¢ (254) and 3¢ (27) Jubilee, with shades, cancels including cds, Squared Circles, appears mostly f-vf. Inspect. Est. 100+
218	☒	Over 35 covers, 6 railway, 10 to US, 6 to Europe, 1 to Scotland and rest within Canada, 1896 Kamsack, ASSA, 2¢ LQ and 1¢ SQ combo cover, to Amsterdam with two 5¢ gray with red London Registered, to Scotland with 10¢ red brown, variety of cancels, advertising, etc, f-vf. Inspect. Est. 400+. Photo Online

219	☒	34(16): HALF CENT : BLACK, irregular BLOCK OF SIXTEEN , showing wide and narrow perforations at right (block of six appears IMPERF BETWEEN), others with vf jumbo margins, applied to frame the address panel and paying the 8¢ REGISTERED RATE , all tied by BRANTFORD 26 MY '96 cds cancels to registered cover to London, Ont, 27 MY receiver on back, some marks/stains on back from mounting hinges, still very fine and attractive rate. Est. 150+Photo
220	★	35d: ONE CENT : ORANGE (Montreal), PERF 11 ½ x 12 , block of four, dull streaky original gum, hh, fresh and fine, ex Cantor, 2016 Greene CertPhoto	800
221	★★	36i: TWO CENT : GREEN, Ottawa, og, nh, very fine.....Photo	300
222	○	37d: THREE CENT : COPPER RED PERF 12½ , 2-RING-7 (St John), minute thin otherwise fine.Photo	900
223	☒	37d: - COPPER RED, PERF 12 ½ tied by 2-RING-7 to cover from SAINT JOHN NB 27 JA 1870 (early use) to Miramichi, 29 JA Chatham and partial Newcastle backstamps, stamp creased UL corner still appears fine and RARE. Est. 250+Photo
224	★★	39b: SIX CENT : YELLOW BROWN, perf 11½ x 12, fresh, nh, finePhoto	1000
225	☒	39b var: - YELLOW BROWN, perf 11½ x 12 tied to cover by St. John N.B. 22 AP 74 duplex to USA, some toning on cover still with 2019 Greene Cert stating GHOSTLY HEAD variety. Est. 250+Photo
226	○	41: THREE CENT : Over 1000 fancy cancels, mostly corks, appears mostly f-vf. Inspect. Est. 150+
227	★	42: FIVE CENT : GREY, og, hinged, very fine. 2019 Gratton Cert	300
228	☒	46,U9: 46: TWENTY CENT : VERMILION, gorgeous example tied to 1¢ green embossed Victoria stationery envelope cancelled by identical ideal strike of 6 Jun 1910 TORONTO STATION 'C' cds dispatch, sent REGISTERED to Detroit with next day receiver on back. The philatelic franking pays triple the normal 7¢ rate but is a choice and most attractive use of the Widow Weeds stamp in-period on a small format displayable envelope, clean and very fine. Est. 650+Photo

JUBILEES

229	★	50/59: ½¢ to 2¢, 6¢ to 10¢ and 20¢ all in fresh blocks of four, mostly two each nh, f-vfPhoto	2108
230	★	50-60: ½¢ to 50¢, 133 mint, ½¢ (11), 1¢ (23), 2¢ (30), 3¢ (22), 5¢ (15), 6¢ (4), 8¢ (8), 10¢ (5), 15¢ (6), 20¢ (6) and 50¢ (2), some faults, appears mostly f-vf..... Photo Online	5735
231	★	50-60: Stock of 43 mint, ½¢ (3), 1¢ (11), 2¢ (7), 3¢(6), 5¢(2), 6¢(1), 8¢(4), 10¢(2), 15¢(3), 20¢(3), 50¢(1), some with minor faults, couple nh, appears mostly f-vf..... Photo Online	2114
232	★	50/60: 13 mint og, fresh and mostly very fine or better and catalogued as such..... Photo Online	1920
233	○	53,54,56: used, 3¢ (100), 5¢ (32) and 8¢ (58), each, mostly f-vf.....	2555
234	★★	53: THREE CENT : BRIGHT ROSE, fresh, nh, very fine.....Photo	120
235	★★	54: FIVE CENT : DEEP BLUE, fresh block of four, well-centered, UL stamps creased at bottom otherwise nh, vf.....Photo	960
236	★	57: TEN CENT : BROWN VIOLET, JUMBO , hinged, superb.....Photo	250
237	★	60: FIFTY CENT : ULTRAMARINE, JUMBO , hinged, superb.....Photo	500
238	★	61: ONE DOLLAR : LAKE, slight toning and some foxing at perfs, hr, appears fine	500
239	★	61: - og, small hr, fresh and fine	500
240	○	62-65: \$2 with partial Toronto cds with crease, \$3 with roller cancel, \$4 faded and \$5 with smudge cancels, all with small or minor faults	2800
241	★	62: TWO DOLLAR : DARK PURPLE, disturbed og, slightly faded, fine.....Photo	1200
242	★	62: - deep fresh colour, LR perf creased, gum disturbance, appears fine	1200
243	(★)	63: THREE DOLLAR : YELLOW BISTRE, regummed. toned on reverse, otherwise appears fine Photo	1200
244	○	63: - roller cancel, horizontal crease at top otherwise very fine	800
245	(★)	64: FOUR DOLLAR : PURPLE, artfully regummed, very good	600
246	(★)	65: FIVE DOLLAR : OLIVE GREEN, unused, thin LL otherwise appears fine	1200

LEAFS

247	★	66-73: ½¢ (37), 1¢ (4), 2¢ (4), 3¢ (6), 5¢ (5), 6¢ (4), 8¢ (5) and 10¢ (2), mostly f-vf, some with small or minor faults, some nh. Inspect. Cat as fine only..... Photo Online	2317
248	★★	68: TWO CENT : PURPLE, nh, very fine	240

249	P	69P: THREE CENT : CARMINE, LARGE PROGRESSIVE DIE PROOF (132x179mm) die sunk on wove (68x74mm), no Die number, light bend at top of card otherwise very fine. (Minuse and Pratt 69PX-D) Est. 1000+	Photo
-----	---	---	-------	-------

250	★★	71: SIX CENT : BROWN, og, nh, extremely fine.....	Photo	600
251	★	71: - og, hinged JUMBO , Superb Est. 150+.....	Photo
252	☒	71: - tied by 17 JA 98 Port Hope Ont. squared circle to local, MIDLAND TRUST COMPANY letter, with straight line h/s NOT-CALLED-FOR, re-sent 28 FE 98 Port Hope Ont., with RECD DEAD LETTER OFFICE 1 MR 1898 and DEAD LETTER OFFICE 2 MR 1898 on back, enclosure, small flap tear and rounded corners, still fine. Move to dead letter office field Est. 130+	Photo

NUMERALS

253	★	74-84: ½¢ (17), 1¢ (8), 2¢ purple (6) carmine (2), 3¢ (2), 5¢ (1), 6¢ (1), 7¢ (4), 8¢ (2), 10¢ (1) and 20¢ (2), mostly f-vf, some with small or minor faults, some nh. Inspect. Cat as fine only.....	Photo Online	2135
254	★★	75: ONE CENT : GREEN, OTTAWA - No - 4 imprint block of 8, stamps nh, slight separation and strong bends, still attractive Est. 150+.....	Photo
255	★	75a: GREY GREEN, IMPERFORATE PAIR , lh and very fine. 2019 Greene Cert.....	Photo	1600
256	★★	76: TWO CENT : PURPLE, block of 4, couple shorter perfs at bottom, still nh, very fine. 2019 Greene Cert.....	Photo	900
257	★	76: - right margin block of 30 (10x3), with PRE PRINT PAPER CREASE at left affecting four stamps, gum thins on two and some gum disturbance otherwise half nh, fine. Est. 350+	Photo Online
258	(★)	MAPS : 85a: IMPERFORATE PAIR , without gum as issued, very fine.....	Photo	700
259	(★)	86a: IMPERFORATE PAIR , minute internal fault at left otherwise fine	Photo	400

EDWARDS

260	★	89-95: 1¢ to 50¢ complete, fresh, f-vf.....	Photo	1300
261	☒	ASSA & SK : 18 postcards and covers, 10 with ASSA postmarks Moosomin, Caron, Whitewood, Francis, etc, with ones to GB, Germany and US, SK with Kronau, Broadview, Claydon, Hanley, etc, advertising, scenes, etc, some condition issues, worthy of inspection, f-vf. Est. 200+	Photo Online
262	☒	Over 130 postcards and covers, with 6 from Yukon, 8 RPOs, 41 Alberta, 36 Ontario, 15 Atlantic Canada, 13 Manitoba, 9 British Columbia, 5 Quebec, advertising, markings, cancel varieties, registered, etc, some with condition issues. Inspection recommended, f-vf. Est. 300+
263	★	90var: TWO CENT : CARMINE, block of 4 with DRAMATIC MISPERF , bottom pair nh. Est. 150+Photo
264	P	94ii: TWENTY CENT : DEEP OLIVE GREEN, with violet serifed SPECIMEN handstamp, regummed, otherwise fresh and very fine.....	Photo	500

QUEBECS

265	★★	99: FIVE CENT : BLUE, nh, extremely fine JUMBO . 2019 Greene Cert.....	Photo	450
266	★★	101: TEN CENT : VIOLET, centered JUMBO , minute natural inclusion and nibbed perfs at bottom, nh, striking Est. 150+	Photo

ADMIRALS

267	★	104-122,126a,128a,MR1-MR6,MR2Bi: 1¢ to \$1 in blocks of 4, 35 vals incl War Tax, carmine coil strip of 4, incl papers, printings, shades, mostly two nh, each, couple small faults, mostly f-vf..	Photo Online	5148
268	★	104-122,123-134,139-140,184,MR1/MR7: Stock of over 220 mint including Wet and Dry printings, shades, Coils, overprints and War Tax issues, some with hr, some nh, mostly f-vf	Photo Online	5138
269	★	104-122,vars: 1¢ to \$1, 36 mint with shades, printings, papers, many very fine, f-vf	Photo Online	1226
270	★	104/184: 1¢ to 50¢, 70 mint, incl shades, printings, coils, booklet panes, many vf. Inspect. Photo Online	1737	
271	☒	Over 35 postcards and covers all with Alberta cancels including 1 RPO, 1912 Stoppington split ring, other smaller locales Wolf Creek, Stand-off, foreign destinations, slogan cancels, rates, corner advertising, markings, etc, f-vf. Inspect. Est. 150+.....
272	☒	Over 90 postcards and covers all with Admiral issue(No Alberta postmarks), with 2 RPOS, various rates, markings, censor, slogan cancels, few military, many corner advertising, foreign destinations including France, US, Belgium, Denmark, UK, Jamaica, etc, f-vf. Inspect. Est. 300+.....
273	★★	104: 1¢ dark green, block of 4 with LATHWORKE B , light diagonal bend o/w nh, fresh and fine .	Photo	300
274	★★	106: 2¢ carmine, UR Plate OTTAWA-No-A139 T-4 (PO) 910X strip of 10, lightly supported between 3 rd and 4 th stamp mostly in selvage, otherwise nh, attractive and fine. Est. 250+	Photo
275	★★	107e: 1¢ green (dry), block of 8, folded along perfs, nh, very fine	Photo	720
276	★	109: 3¢ carmine, Plate T-7-OTTAWA-No.-A 115 944 AT , block of ten, first plate used, hh, otherwise very fine. Est. 300+	Photo

			UCS Cat Val
277	★★	109: 3¢ carmine, block of four with LATHEWORK D , nh, fresh and fine.....	Photo 300
278	★	111: 5¢ blue, LL plate *OTTAWA - No. - A 13 (PO) 940*Q strip of ten, seven stamps nh, one shows natural gum skip, fresh deep blue colour, almost very fine. Est. 1000+.....	Photo
279	✉	111,116: 5¢ blue (straight edge at top) and 10¢ purple, both tied by large oval 'R' to large sturdy 15¢ registered rate cover NORWOOD GROVE, MAN 23 MR '21 to SWITZERLAND , two scarce NORWOOD GROVE REGISTERED OVALS and Winnipeg transits on back plus Albsrieden (Zurich) 13.IV receiver, ex Brigham with small red ownership mark, choice and very fine. Est. 175+	Photo
280	★★	114b,v: 7¢ red brown, Plate T-7-OTTAWA-No-A 8 (PO) 933P block of eight, five stamps with diagonal line in the 'N' of CENTS, six stamps nh, almost very fine. Est. 500+	Photo
281	★	115: 8¢ blue, upper Plate L.B.C.- OTTAWA-No-A 2 strip of three, hr in selvedge only, deep rich colour, left stamp nh, very fine. Est. 150+	Photo

282	★★	116: 10¢ plum (wet), with full LATHEWORK C , light trace of bend still nh, fine.....	Photo 2500
-----	----	---	------------

283	★★	122: \$1 orange, (dry), nh, JUMBO , very fine	Photo 390
284	★★	184: 3¢ carmine, perf 12 x 8 in PLATE NO A-13 945 Y IMPRINT block of 18 with cutting arrow at right, some light creasing in selvedge only, otherwise nh, very fine. Est. 150+	Photo Online
285	★★	136-138: IMPERFORATES 1¢ to 3¢ complete in BLOCKS OF FOUR, nh, very fine	Photo 1000
286	★★	139i: Three different ONE LINE SURCHARGE VARIETIES two SHIFTED UPWARD, one at top and one in middle of stamp and SPLIT, nh, fine. All with KB (Bileski) backstamps	Photo 405

1917 CONFEDERATION TO MODERN

287	★★	135/230: GEORGE V Collection of 82 mint, virtually complete, including coils and booklet panes, all mint never hinged mostly very fine. (Cat as nh fine only).....	1722
288	★★	135: 1917 CONFEDERATION , nh, extremely fine.....	Photo 210
289	★★	142a,145b: 1927 CONFEDERATION : 2¢ *IMPERFORATE PAIR and 12¢ horizontal pair IMPERFORATE VERTICALLY , nh, fine.....	Photo 350
290	★★	145: 12¢ Confederation, LL sheet of 50, missing selvedge at right, nh, f-vf.	Photo Online 1125+
291	★★	146c: 5¢ McGee vertical pair IMPERFORATE HORIZONTALLY , nh, very fine	Photo 240
292	★★	147: 12¢ Historical, LL complete sheet of 50, fresh, nh, f-vf. (Cat as nh, fine only).....	Photo Online 562
293	★★	149-159: 1928-29 SCROLL ISSUE 1¢ to \$1 cpl, nh, high vals very fine.....	Photo 1075
294	★★	155b,156b: 10¢ Mount Hurd very fine and 12¢ Quebec Bridge almost very fine in horizontal pairs IMPERFORATE VERTICALLY , nh.....	Photo 593
295	★	158: 50¢ BLUENOSE , block of four, top two lh otherwise nh, fine	Photo 900
296	★★	158: nh, fresh and fine.....	Photo 300
297	★	158b: 50¢ BLUENOSE, horizontal pair IMPERFORATE VERTICALLY , vlh, very fine	Photo 1000
298	★★	159: \$1 PARLIAMENT, olive green, nh, almost very fine.....	Photo 375
299	★	159: - block of four, bottom two nh, couple perf faults at left otherwise fine	Photo 1125
300	★★	165b: 2¢ dark brown, complete UL PLATE NO. 5 sheet of 100, minute piece of selvedge missing otherwise nh, fine.....	Photo Online 612
301	★★	165b: complete UL PLATE NO. 6 sheet of 100, nh, fine	Photo Online 702
302	★★	165b: complete UR PLATE NO. 6 sheet of 100, tiny piece selvedge missing otherwise nh, fine ..	Photo Online 649
303	★★	169: 5¢ dull violet, rotary, complete UR PLATE NO. 1 sheet of 100, tiny piece of selvedge missing otherwise nh, fine.....	Photo Online 613
304	✉	183: 3¢ deep red tied to cover by Calgary 18 Dec 1933 slogan cancel to Shanghai CHINA where 20¢ orange Post adhered, redirected to Batavia Centrum, Java SINGAPORE , with 5¢ red Straits Settlements Postage Due adhered 22 JA 34, arriving 31 Jan 34, where 12½¢ Netherlands Indies Postage Due adhered on back, multiple backstamps and markings edge and corner faults still interesting and fine. Est. 120+	Photo
305	★★	190: 10¢ Cartier, LL Plate 1 block of 90, nh, very fine	Photo Online 5360
306	★★	193: 5¢ Economic Conference, UR Plate 1 sheet of 100, selvedge at left folded under, trimmed and stuck to first row, otherwise fresh, nh f-vf. (Cat as nh, fine only).....	Photo Online 747
307	★★	194: 13¢ Economic Conference, Plate 2 sheet of 100, folded, some small selvedge faults otherwise nh, f-vf. (Cat as nh, fine only)	Photo Online 1008
308	★★	216: 13¢ Britannia, bottom Plate 2 COMPLETE SHEET OF 100, with CANADA BANK NOTE CO OTTAWA No2 inscriptions at LR and LL, folded, nh, very fine.....	Photo Online 2313

			UCS Cat Val
309	★★	216i: 13¢ dark blue Britannia with SHILLING MARK , minute natural inclusion otherwise nh, fine Photo	600
310	★	223a: 10¢ carmine rose, bottom margin IMPERFORATE PAIR , light overall gum disturbance, otherwise very finePhoto	400
311	★★	224: 13¢ violet, LL CANADIAN BANK NOTE CO. OTTAWA No 2 complete sheet of 50, light crease left selvedge and wrinkle position 45 otherwise nh, very fine Photo Online	960
312	★★	226i: 50¢ BC Parliament block of four showing MAJOR RE-ENTRY on LR stamp, UL stamp very light bend otherwise nh, very fine.....Photo	412
313	★★	231/458bp: GEORGE VI Collection of 197 mint, plus some Elizabethan issues, virtually complete, including coils and booklet panes, all mint never hinged very fine.....	1605
314	★★	241a: 10¢ carmine rose, UR Plate 2 complete sheet of 50, nh, very fine. Photo Online	905
315	★★	241c: 10¢ carmine rose, IMPERFORATE PAIR , nh, light vertical crease at left appears very fine. (75 pairs exist)Photo	625
316	★★	245i: \$1 Chateau de Ramezay, ANILINE VIOLET block of four, nh, very finePhoto	900
317	★★	258: 13¢ Tank, LR Plate 1 complete sheet of 50, nh, very fine Photo Online	652
318	★★	4¢ INDIAN HEAD ESSAY , UR margin BLOCK OF FOUR , full og, nh and very fine. Est. 350+Photo
319	★★	302: \$1 Fish, UL Plate 1 block of 4, nh, very fine Photo Online	300
320	★★	302: - complete sheet of 50, small adhesion position 8, otherwise nh, f-vf..... Photo Online	3060
321	★★	387a: 5¢ St. Lawrence Seaway with INVERTED CENTRE , light corner crease upper right and slight gum disturbance, otherwise nh and very fine. 2020 Greene Cert.....Photo	12500
322	★★	CENTENNIALS : 454-465B, 543-44, Accumulation of over 90% cpl sheets with a few blocks and pairs, much identified as to gum, fluorescence, etc, huge catalogue value, f-vf. (Face val - \$567)
323	★★	456pxx: 3¢ dull purple PRECANCELLED warning strips of 20, five left and five right side margin copies, nh, very fine	700
324	O	458bp: 5¢ miniature pane of 20, 140 copies used, f-vf	19600
325	★★	550a: 8¢ slate, IMPERFORATE PAIR , nh, finePhoto	750
326	★★	554var: 1971 6¢ Snowflake nh block of 40 with major shift causing right vertical perf line to run through '6', fresh colour, great variety to add to collection or exhibit, f-vf. Est. 100+ Photo Online
327	★★	591var: 6¢ Pearson dark red, block of 20 with DOUBLE HORIZONTAL PERFS between rows 7 and 8, and 8 and 9, nh, very fine. From the Bileski stock. Est. 150+ Photo Online
328	★★	591iv: 6¢ Pearson, bottom margin block of four with IMPERFORATE BOTTOM HALF OF STAMPS AND MARGIN , nh, very fine.....Photo	800
329	★★	614a: 15¢ Musical Ride, IMPERFORATE PAIR , usual light wrinkle otherwise nh, very finePhoto	300
330	★	648ii: 1974 8¢ UPU Centenary with 'Ghost' variety x 1000 copies, mostly in large multiples, mainly nh and fine Est. 200+.....
331	★★	934var: \$1 Glacier National Park with SEVERELY SHIFTED INSCRIPTIONS (CANADA shifted to centre printed over mountain peak and '\$1' at right edge), nh, vf and quite striking. Est. 150+Photo
332	★★	936a: (\$2 Banff) National Park with BLUISH GREEN INSCRIPTIONS OMITTED (CANADA, BANFF, POSTES POSTAGE and '\$2'), an attractive left margin example, nh, very fine and RARE.....Photo	1500
333	★★	1155/1180: 1988 to 1992 Mammal definitives almost all cpl sheets with a few blocks, 1174i, 3 plate blocks, 1155a cpl sheet (1¢ with perf variation), 1160a cpl sheet (10¢ with perf variation) among many better throughout, (No 1172d), clean, f-vf.	6597
334	★★	1167b: 39¢ Queen Elizabeth II PERF 13.1x12.8 matched set of FULL INSCRIPTION plate blocks of four, nh, very fine. RARE.....Photo	4000
335	★★	1167b: -as above, matched set of FULL INSCRIPTION plate blocks of four, nh, very fine. RARE Photo	4000
336	★★	1172d: 1990 45¢ Pronghorn cpl sheet with 13.1 perf, clean, fresh, nh, f-vf..... Photo Online	1535
337	✉	1250ii: 38¢ Regiments in matched set of INSCRIPTION blocks of 4 on four FDCs, all clean, unaddressed and very fine.	500
338	★★	1292d: 39¢ Folklore, perf 12.5x12, complete sheet of 50 with full MCDONALD'S imprints, selvedge faults at UL otherwise nh, very fine. Photo Online	2210
339	★★	1292ii: 39¢ Folklore Sasquatch and Werewolf in se-tenant IMPERFORATE PAIR , nh, very fine .Photo	950
340	★★	1442a vi: Twenty-four examples of 1992 Canada in Space, with 'meteor shower' variety, (CV \$4800), nh and very fine. Inspect. Est. 250+ Photo Online
341	★★	BOOKLETS : 20¢ to \$9.60 booklets with mostly 50¢ to \$3.84, nh, f-vf. (Face val - \$309).....

342	★★	BK4b: COMPLETE BOOKLET (FRENCH) with four 1¢ yellow panes of 6, with LARGE CAPITALS, small piece of slogans page missing otherwise clean, nh, fine.....Photo	700
343	★★	BK5a: 2¢ carmine, two panes of six, 17.7 x 21.5mm, minor cover fault at staple otherwise nh, finePhoto	750
344	★★	BK9a: COMPLETE BOOKLET (FRENCH) with 1¢ yellow, 2¢ green and 3¢ brown panes of four, cover bends and scuff, UR corner bends, nh, still fine.....Photo	1300
345	★★	BK20b: COMPLETE BOOKLET (French) with 1¢ dark green, 4 panes of 6, Type II, nh, clean and almost very fine centering.....Photo	600
346	★★	CANADA POST THEMATICAL COLLECTIONS: NHL Collector's albums, 2013, 2014, 2016 and 2017, only 10000 of each produced, very fine.....	800
347	★O	About 350 mostly used, with over 20 Airs, over 40 Special Delivery, over 250 O.H.M.S. perf and ovpt and 'G' ovpt, with Edward 5¢ precancel 4-91-I, PWF6 Prisoner of War unused single, most sorted and identified. Inspection could yield further value, f-vf. Est. 250+.....
348	✉	FLIGHT COVERS: Over 175 mostly FFCs from 1928 to 1958 with bulk being 1928 to 1939, with some early airmails, some duplication, much various legs of one flight and return legs, clean, f-vf. Est. 300+.....

SEMI-OFFICIAL AIRMAILS

349	★O	CL7/CL52: 14 different, almost all mint, including CL7, CL24, CL30 with inverted ovpt, CL43 used on piece, etc, plus a variety of strike and courier labels, mint and used, f-vf. Inspect. Est. 400+.....
350	✉	Eleven covers, CL40(4), 2-1927, 2-1929, CL42, CL46(2), CL46i(Roessler cover), CL47 (early usage May 21 st) and CL50(2), many with additional markings, clean lot, f-vf.....	665
351	(★)	AERO CLUB OF CANADA: CLP3a: two copies, thin paper, no gum, one copy with stains, other copy has small right shift of red showing on wings, fine.Photo	500
352	★	ESTEVAN-WINNIPEG: CLP5: water damage top left quadrant otherwise fine.....Photo	400
353	★★	ELLIOT-FAIRCHILD AIR SERVICE: CL8,CL8c: (25¢) red on yellow background of swastikas, COMPLETE PANE OF 8 showing the 'tall r' variety at positions 2 and 4, nh, vf. Photo Online	675
354	★★	CL8,CL8c: CL8,CL8c: (25¢) red on yellow background of swastikas, COMPLETE PANE OF 8 showing the 'tall r' variety at positions 2 and 4, never hinged, very fine..... Photo Online	675
355	★★	CL8,CL8c:vars (25¢) red on yellow background of swastikas, COMPLETE PANE OF 8 showing the 'tall r' variety at positions 2 and 4 and with EXTRA ROW OF HORIZONTAL PERFORATIONS THROUGH ENTIRE TOP ROW OF SHEET , nh, vf and EXCEEDINGLY RARE . Est. 750+Photo Online
356	★★	CL9c,CL9d: (25¢) blue on yellow COMPLETE PANE OF 8 with upper right stamp inverted, showing 'filled-in wing' variety at position 1, never hinged, very fine. Photo Online	615
357	★★	CL9c,CL9d: (25¢) blue on yellow COMPLETE PANE OF 8 with upper right stamp inverted, showing 'filled-in wing' variety at position 1, never hinged, very fine. Photo Online	615
358	★★	CL9c,CL9d: (25¢) blue on yellow COMPLETE PANE OF 8 with upper right stamp inverted, showing 'filled-in wing' variety at position 1, few small perf separations in selvage, f-vf..... Photo Online	525
359	★	PATRICIA AIRWAYS: CL19: 10¢ ovpt Type A in red ascending, small hr, fresh, very fine.....Photo	350
360	★★	CL25: (50¢) green and red on yellow with 5¢ Overprint Type B in BLACK descending, COMPLETE PANE OF 8 , Plate 11, with CL25e, malformed 'o' in position 7, 2 small dots on back, ovpt bleeding through on one stamp, hinge remnant in selvage, fresh and clean, nh, f-vf. Photo Online	1375
361	★★	WESTERN CANADA AIRWAYS: CL40: (10¢) black and pink, cpl sheet of 50, nh, f-vf. ... Photo Online	525
362	★★	CL40: (10¢) black and pink, COMPLETE SHEET OF 50 , never hinged, f-vf. Photo Online	525
363	★★	CL41: (10¢) black and orange COMPLETE SHEET of 50 , never hinged, f-vf. Photo Online	1200
364	★★	CL41: (10¢) black and orange COMPLETE SHEET of 50 , never hinged, f-vf. Photo Online	1200
365	★★	COMMERCIAL AIRWAYS LTD: CL50,CL50d: (10¢) orange 'AIR FEE', COMPLETE PANE OF 10 showing 'break in oval' variety at position 1, never hinged, f-vf. Photo Online	287
366	★★	CL50,CL50d: (10¢) orange 'AIR FEE', COMPLETE PANE OF 10 showing 'break in oval' variety at position 1, never hinged, f-vf. Photo Online	287
367	★★	COMPUTER VENDED POSTAGE: 2020: LANDSCAPES by Canadian Painters, \$1.30 oversize rate,14 digit,code, with a regular strip of five and three examples of mis-aligned strips of seven, leaving some stamps blank, others with just the value or just the 14 digit number code, unseen before or offered and unlisted in Unitrade. Est. 150+.....Photo
368	✉	AIR MAIL SPECIAL DELIVERY: CE2: Flimsy envelope mailed from Shanghai 7 Mar 46, received in Port Moody 20 Apr 46, readdressed to Seattle, mailed from Vancouver 26 Apr 46 with added 17¢ Special Delivery AIR stamp and 'Special Delivery Expres' label, received in Seattle 27 Apr, 46, additional markings, small tears and edge faults still appears fine. Est. 100+.....Photo

369	★★	POSTAGE DUE: J7: 2¢ dark violet, Plate 1 complete sheet of 100, crease affecting 3 stamps, light overall toning, some selvage separation, otherwise fresh, nh, f-vf.	Photo Online	945
370	★	WAR TAX: MR2Bi-MR2Di: INLAND REVENUE WAR TAX diagonal overprints, 5¢ to 50¢ complete in blocks of four, bottom stamps nh, 20¢ UL stamp with light mark otherwise fine.	Photo	1560
371	★	MR4: 2¢ + 1¢ brown, with LATHEWORK A and Plate No. under Lathework, hr, fine.	Photo	150
372	★★	OFFICIALS PERFORATED OFFICIALS: FOUR HOLE: O259L 14¢ Tank, Plate 1 LR complete sheet of 50, light bends UL corner otherwise nh, very fine	Photo Online	900

OFFICIALS

373	★★	O.H.M.S. OVERPRINTS: O1: 1¢ War LL Plate 31 sheet of 100, nh, very fine	Photo Online	456
374	★★	O3,O3i: 3¢ War complete LR Plate 34 sheet of 100 with NARROW SPACING , nh, vf.....	Photo Online	657
375	★★	O4: 4¢ War complete LL Plate 34 sheet of 100, nh, very fine.....	Photo Online	636
376	★	O9: 50¢ Lumbering with O.H.M.S. overprint, block of four, lh, almost very fine	Photo	640
377	★	O10: \$1 Ferry with O.H.M.S. overprint, UR Plate 1 block of four, lh and pencil notations on selvage, stamps nh, very fine	Photo	525
378	★O	G OVERPRINTS: Accumulation of thousands of mint and used in singles, blocks of four and larger multiples, heavy duplicated, appears f-vf. Inspect. Est. 250+
379		SEALS: Accumulation of various seals for Lung Association and Canadian Wildlife Federation mostly in cpl sheets or large multiples, mainly from 1960s to 1980s, also a small group of Easter Seal from the 1990s, a few sheets are stuck together, much is nh and fine. Inspect Est. 100+
380		Canadian Cinderella's in singles, pairs, part sheet and sheets appears from 1940s to 1990s, incl Red Cross, Local Post, Emergency Mail, Private Couriers, f-vf. Inspect Est. 150+

REVENUES

381	★O☒	FEDERAL AND PROVINCIAL: Law Stamps from various reigns incl FSC5, 6, 7, 17 and 18, all used, small group of 'Excise Stamps' FX24/129, A group of 'Playing Card' stamps mostly with Cancelled in black printed across them, also a part filled 'Vacation Stamp Book' and a group of 19 documents/cheques mostly from 1920s, mainly f-vf. Inspect Est. 250+	Photo Online
382	★O☒	A mint and used Federal and Provincial accumulation of revenues, singles to full sheets, Alberta to Saskatchewan, huge cat val, duplication otherwise fine. Est. 800+.....
383	P	FEDERAL BILL STAMPS: FB18-FB36: 1865 SECOND ISSUE, 1¢ to \$3 PLATE PROOF PAIRS on india paper or card, incl 7¢ and 20¢, 10¢ green trimmed at top, otherwise fine. Est. 500+ Photo Online
384	P	FB18-FB36: 1¢ to \$3 PLATE PROOF singles on india paper or card, incl 7¢ and 20¢, mostly f-vf. Est. 250+.....	Photo Online
385	★★	FB52-FB54: \$1 to \$3 all in UL corner margin blocks of four, \$1 bottom pair light horiz bend, couple light natural gum bends, stamps never hinged fresh and fine.	Photo	1360
386	(★)	FB52a: \$1 blue and black IMPERFORATE BLOCK OF FOUR , light toning on reverse from old hinges, still very fine	Photo	260
387	P	SUPREME COURT LAW STAMPS: 1864, collection of proofs, partial sets for 'CF' to \$4, 'FF' to \$5, with small group with no OVPT on 10¢, 70¢, 90¢, \$2, \$4, and a five values with OVPT 'LC', unlisted in Van Dam, mainly f-vf. Inspect. Est. 500+	Photo Online
388	O	FSC18a: 1935, \$1 slate, eleven used examples with consecutive numbers 4446821 to 444834, appears f-vf.....	Photo Online	440
389	★★	FSC31: 1915 25¢ blue, with red IN PRIZE overprint, a couple of shorted perms in LL corner and minute gum disturbance from split mount, otherwise nh and fine. Scarce.....	Photo	1250
390	☒	EXCISE TAX: Seven covers 1920s to 1940s, all with either 'Excise' or 'Postal Note' stamps, used as postage, many have postage dues attached to covers, nice group, f-vf. Inspect. Est. 150+Photo Online
391	☒	Over 11000 CHEQUES, mostly 1920s to 1930s with revenue stamps affixed, some with regular issues, mostly f-vf. Inspect. Est. 150+
392	★O	WAR SAVINGS: 1940 to1941: FWS 6/13, a group of nine single stamps, mostly nh, and a block of four, nh, plus two savings forms, complete and near complete, and a perforated coupon, advertising '2 nd Victory Loan Coupons' due 1 st March 1945, appears mainly f-vf	Photo Online	796
393	★★	SASKATCHEWAN LAW STAMPS: SL76-SL78: Three copies each of the 1968, complete sheets of 50 (10 x5) rouletted, for \$10 green, \$20 rose carmine and \$50 blue, nh and fine. Est. 300+Photo Online

- 394 (★) **TOBACCO STAMPS:** Spectacular collection of over 600 stamps including **1870** rectangular in tobaccos, 34 different in **BLOCKS OF FOUR**, ¼ lb to 16 Pounds in black, red and brown, various watermarks, unwatermarked, various papers. Also complete sheet of ¼ lb black "HAMILTON" port with 4 British American Bank Note Co inscriptions. 40 Large **CADDY**, **MBBOXES*** stamps with **SNUFF** and other overprints. Three different Large square tobacco stamps with Queen Victoria in blocks of 4 in black, red and blue. 135 1880 Tobacco strips in pairs and larger multiples in various colours, etc. Four different **COMPLETE SHEETS** of green **CANADA LEAF ONLY** in 1/20, 1/10, ½ and 1 Pound stamps. 1880 large red strip in block of 6. 24 1880 cigarette stamps in **GUTTER STRIPS OF FOUR** plus complete sheet of 24 with gutter in centre. 24 1880 cigarette strips in blocks of 4 or larger. **1885 SNUFF** in blocks of 4 of 1/16th lb and 1/8th lb blue with **BEAVER IN CENTRE OF DESIGN**. Very **RARE** especially in blocks. Blocks of 4 of 1886 1/40th lb cigarettes, black, 1/20th lb cigarettes blue, 1/10th lb tobacco black, 1887 1/8th lb black tobacco, 1883 black tobacco strips in blocks of 4 1/16th, 1/10th and 1/8th lb. **COMPLETE SHEETS OF 12 of 10 POUNDS CAVENDISH** in black and blue, each stamp with beautiful engraving of Queen Victoria. Two blocks of 4 of 1880s very large tobacco strips with very intricate designs (G509,P975). **SPECTACULAR**. in two large custom-made albums, very clean and f-vf. inspect. Est. 3000+ Photo Online
- 395 (★) 15 large square and rectangle revenues including #RM13, 16, 59, 62, 170, 173, 192, 211, 216, 219, 227, 229, 232L and Raw leaf #RA12, and 14. Inspect. Est. 600+



95



125



127



128



96



129



130



131



132



133



135



137



138



142



134



139



140



141



143



144



145



147



148



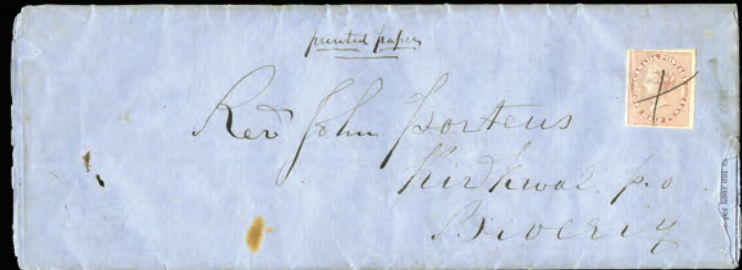
146



149



150



151



152



153



154



155



156



157



158



159



161



162



163



164



172



170



171



165



173



174



175



176



180



181



182



184



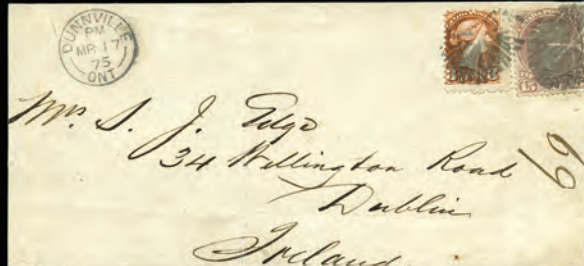
185



186



188



187

189

190

187

192

193

195

194

196

197

198

199

200

201

203

204

205

206

210

213

212

211

215



219



220



221



222



224



227



223



225



228



229



234



235



237



238



239



240



241



242



243



244



245



246



248



250



251



249



252



254



255



256



258



260



259



263



265



273



264



266



274



275



282



291



277



276



279



278



280



281



283



293



288



296



297



289



294



325



295



298



304



299



309



315



310



321



331



316



318



328



329



332



334



335



339



342



343



351





344



345



359



389



367



368



371



352



370



376



377



385



386



400



401



404



405



406



407



408



409



410



411



412



413



414



415



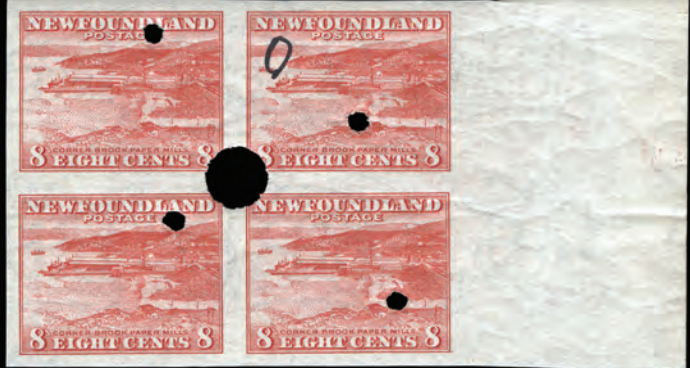
416



417



433



434



432



435



436



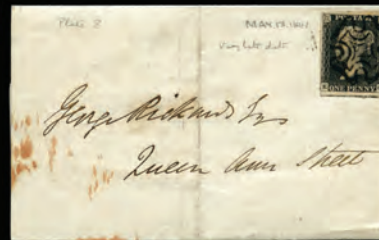
437



438



450



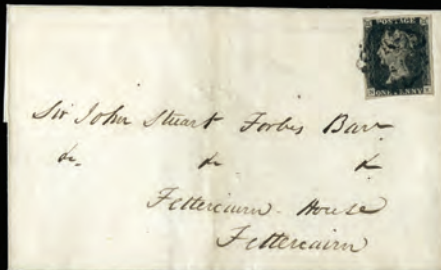
453



454



451



452



501



502



459



504



507



509



511



512



513



514



516



517



518



510



519



524



520



521



522



523



525



526



529



530



527



528



531



534



533



535



536



539



541



542



543



544



545



547



548



552



554



554



556



557



558



559



561



673



674



684



685



695



713



717



718



729



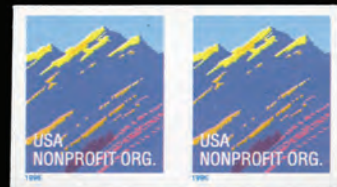
712



719



741



773



775

CANADA PROVINCES

COLLECTIONS AND LARGER LOTS

396	★O	Collection of mint and used in a white binder with NS 3d, NB, PEI, and Newfoundland collection from 1865 onwards. Inspect. Est. 450+
397	★O	Collection of 10 New Brunswick including faulty 3 pence, 21 Nova Scotia including faulty Pence with two shades of both 3 pence and 6 pence, Prince Edward Is, and loose Newfoundland, quality mixed, much is f-vf. Inspect. Est. 250+
398	(★)	BRITISH COLUMBIA & VANCOUVER IS: 5-8: 5¢ and 10¢ Queen Victoria unused with some toning, 2¢ on 3d brown couple small tears, still good looking space fillers..... Photo Online	660
399	★O	5/9: Six vals with faults, mostly minor, good space fillers. Est. 100+	Photo Online
400	O	17: 50 CENTS 50 on 3d violet, perf 12½, blue Victoria "35" cancel, minute thin o/w appears vg ..Photo	650
401	P	NEW BRUNSWICK: 5Pv: PLATE PROOF on india in BROWN with CARMINE specimen (type C), with some ink marks on surface, otherwise fine	Photo 250
402	P	6P-11P: 1860 PROOFS , cpl set, 1¢ to 17¢, all on india on card, fresh and vf.	Photo Online 445

NOVA SCOTIA

403	P	CENTS ISSUE PROOFS: 17 different, with shades, ovpts, plus 1¢ with faded overprint, all on india, some on card, f-vf.....	Photo Online 1310
404	P	8P2: ONE CENT: Small Die Proof on india (31x37mm), very fine. Est. 250+	Photo
405	P	8P2: Small Die Proof on india (31x37mm), unfinished background, very fine. Est. 250+	Photo
406	P	11Pvar: EIGHT CENT: Small Die Proof on wove (27x29mm), very fine. Est. 150+	Photo
407	P	13P1: TWELVE-AND-A-HALF CENT: Small Die Proof on india (41x41mm), small gum mark at right, still very fine. Est. 250+.....	Photo
408	(★)	1P/6P: PENCE ISSUES: REPRINT PAIRS on thin hard paper of 1d in brown, 3d in blue, 6d in dark green and 1/- in violet black, very fine.....	Photo 1000
409	(★)	2: THREE PENCE: BLUE, unused, fresh, very fine	Photo 1600
410	☒	2: STEEL BLUE , large to jumbo margins just tied to folded letter date 17 March 1860, with Halifax Nova Scotia MR17 1860 and Pictou MA 19 1860 NS back stamps, filing fold through middle of cover..Photo	800



411



412

411	★	4: SIX PENCE: YELLOW GREEN, mint original gum, hr, large to huge margins all around including part of adjacent stamp, fresh and bright color, extremely fine. Ex Ferrary and with his small purple trefoil on back. Ex Dale-Lichtenstein. 2000 Greene Cert	Photo 15000
412	(★)	4: SIX PENCE: YELLOW GREEN, unused, full to large margins, fresh and very fine, 2008 Greene Cert	Photo 7500



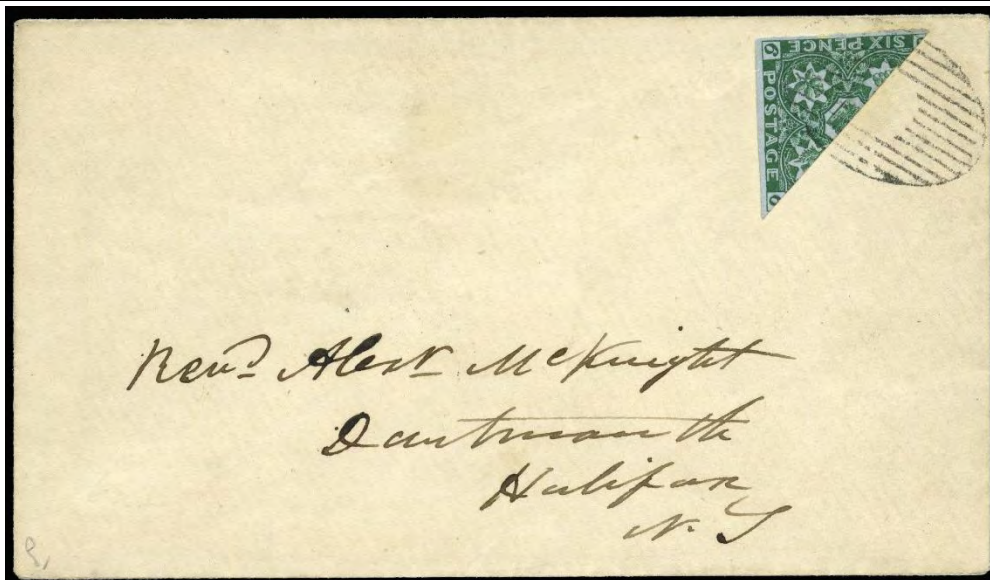
413 4: **SIX PENCE**: YELLOW GREEN, huge to into adjacent stamp margins, tied by mute grid to cover to Lynn Mass (USA), with red US PAID 10 rate stamp, Bridgetown SE4 1860 N.S. and Annapolis NO 5 1860 US backstamps, cover trimmed at left, otherwise very fine, 2020 Greene CertPhoto 2000



414 4a: **SIX PENCE**: YELLOW GREEN, **BISECT** with large margins tied to cover to Bridgeton, with Wilmot N.S. AU25 1856 and 27 AU (Bridgetow)n backstamps, receipt docketing at left, fresh and extremely fine. Ex Redford, 2001 Greene CertPhoto 6000



415 ☒ 1,5: **ONE PENNY**: RED BROWN, pair and **SIX PENCE** DARK GREEN all with faint grid cancel, on large part folded letter to Newfoundland with partial Harbour Grace cancel on front and front, (? V)illage DE29 1858 N.S., trimmed at both ends, still appears very fine. RARE. Ex Burrows, Luden, Cartier. 2020 Greene Cert. Est. 5000+.....Photo



416 ☒ 5a: **SIX PENCE**: DARK GREEN, **BISECT** full to large margins tied by mute grid cancel to Dartmouth, Halifax, NS, with (?)STER-COVE NO30 1859 C.B and Halifax oval DE 1 1859 NS, small piece of flap missing and repaired, otherwise very fine, 2020 Greene Cert.....Photo 8000



417 ○ 7: **ONE SHILLING**: DULL VIOLET, large even margins all around, beautiful colour, oval grid cancel, extremely fine **GEM**. Ex Dale-Lichtenstein. 2000 Greene Cert.....Photo 9000

- 418 ★ **PRINCE EDWARD IS** 1/16: Collection of 13 different plus New Brunswick and Nova Scotia Cents issues, mostly f-vf Photo Online 712

NEWFOUNDLAND

- 419 ★ 104/225,J1-J7: 89 different in complete sets, incl 1911 Royal Family, Caribou, 1929-31, 1931 and 1932-37 Pictorial issues, Gilbert and Dues, f-vf Photo Online 975
- 420 ★O Mint and used collection 1865 on, plus some PEI, and NS but sparse and Canada, quality a bit mixed, appears mostly f-vf. Inspect. Est. 400+
- 421 ★O 24/270,etc: Collection of over 180 different mint and used mostly in earlier issues, with Roulettes, 1897 Discovery, Pictorials, Gilbert, etc, appears mostly f-vf, plus some duplication and other Provinces not included in totals. Inspect. 1991
- 422 ★O 20/266,etc: Over 190 mint and used, some both, mostly 1880s on, with 1897 Discovery, Guy, 1911 Royal Family, Caribou, etc, minor duplication, quality mixed, much is f-vf. Inspect..... 2470
- 423 ★O 1/270,etc: Collection of over mint and used, incl Discovery cpl mint, Caribou cpl mint, Dues, etc, earlier quality a bit mixed and much is without gum, otherwise mostly clean and f-vf 2336
- 424 ★O 11A/270,etc: Collection of over 450 both mint and used, including Caribou, 1923-24 Pictorials, Publicity, Resources, Gilbert, Airs, Dues, some duplication, some nh, some earlier without gum, appears mostly clean and f-vf 4012
- 425 O 184, 191, 245, 246, 247, 254, 255, 269: 40000 used, in packs of 1000 each, mostly f-vf. Est. 100+
- 426 O 44/270: Over 2500 used mostly with cds cancels, with Caribou, Pictorial, etc, duplication up to 300 each, neatly mounted on stock pages, plus used set of Canada Quebec issue, mostly clean and f-vf. Inspect. Est. 200+
- 427 O Accumulation of thousands of mostly used loose in shoe box, 1900s on, some earlier, with cds', etc., great lot for cancels, appears mostly f-vf. Inspect. Est. 150+
- 428 ☒ Eclectic selection of 13 items highlighted by FF37 flight cover leaving St. John's Jan 29, 1931 to St. Anthony's, arriving February 13th, 2½ flight took 16 days, 1937 FDC of cpl "Long Coronation" issue, 6 post cards(5 unused), Post Band W2, 2 used copies, censored airmail cover, etc, worthy of inspection, f-vf. Est. 150+ Photo Online
- 429 ☒ **NEWFOUNDLAND POSTAL STATIONERY**: Five items all with "SPECIMEN" ovpts, black Type II, includes envelopes EN 2(3¢ violet) and 3(5¢ blue) and Post Bands W1(1¢ green), 2(2¢ red) and 3(3¢ brown), W2 and W3 with small pencil notations, otherwise all very fine. Photo Online 625
- 430 ★ 1/23: Eight different mostly with og, couple ownership marks, otherwise f-vf Photo Online 245
- 431 ★ 1,11A,15A,17-18,20-23: **PENCE ISSUES** 10 mostly different, all with og, clean and f-vf.. Photo Online 630
- 432 O 25: **FIVE CENT**: BROWN, used, couple of nibbed perfs, otherwise finePhoto 300
- 433 P 61P-74P: 1897 **DISCOVERY OF NEWFOUNDLAND PROOFS**, 1¢ to 60¢ complete, all on india on card, fresh colours and fine.Photo 775
- 434 ★★ 259ii: 8¢ red, side margin **IMPERFORATE BLOCK OF FOUR** with **PRINTER'S PROOF PUNCH HOLES** and showing **PRINTER'S CORRECTION MARK**, usual wrinkles, and creased in margin, still nh, very finePhoto 450
- 435 ★★ C12: 1932 **DO-X**, nh, almost very finePhoto 450
- 436 ★★ C12: 1932 **DO-X**, missing gum on the perf tips, still nh and finePhoto 600
- 437 ★ C12: 1932 **DO-X**, very finePhoto 400
- 438 ★ C18b: 1933 **BALBO**, perf 13.8, fresh and finePhoto 400
- 439 ★★ C19note: **1932 \$1 'WAYZATA' AIRMAIL** in complete sheet of 20, nh, very fine, scarce.. Photo Online 1000
- 440 ★O☒ **NEWFOUNDLAND REVENUES**: 17 cheques and receipts, mostly from the 1920s, some with stamps attached, also NFR 36, nh plate block of four, NFR 16, 17, 23, NFW 2 and a page of 'Tea Coupons', mostly f-vf. Inspect. Est. 250+ Photo Online

GREAT BRITAIN

COLLECTIONS AND LARGER LOTS

- 441 ★O Collection 1840 to 1970 in Davo hingeless album, hundreds of mint and used incl Victorian incl 1/- and 5/- vals, Edwards to 2/6-, Seahorses, Elizabethan mostly mint, plus mint stock of hundreds neatly sorted in envelopes mostly mint or unused, earlier usual mixed quality, many appear f-vf. Inspect. Est. 350+

442	★O	Collection of hundreds of used 1840 to 1940s incl Penny Black on piece with MC, 11, 39, 44, 45 Pl 6, Pl 9, 57 Pl 2, 62 Pl 17, Pl 18, 66 Pl 1, Pl 2, Pl 3, 70 Pl 18, 96, 102, 103, 137-142, etc, usual quality, much is f-vf. Inspect.....	9357
443	★O☒	Collection and accumulation of mint and used, Penny Reds to 1980s, in albums, on album pages, stock books and loose in packages, much mint, Machins, booklets, yearbooks 1999, 2002 to 2005, Channel Is, few covers mostly FDCs, disorganized, f-vf. Inspect. Est. 300+
444	★O☒	Collection of a couple hundred stamps with bulk being Victorian to Edwards, Penny Black with 3 margins, Victoria 1/- Green and Edward 9d both used with 'Gov't Parcels' ovpt, offices abroad with Eritrea, private perfins, about 30 covers more modern, most philatelic or airmail related including FFCs, f-vf. Inspect. Est. 250+
445	★O☒	A mint and used accumulation in a album and loose, with FDCs 1966 to 1982, Booklets, Prestige booklets incl Wedgewood, mint 1971 to 1984, (Face val - £150+), mostly f-vf. Inspect. Est. 150+.....
446	★	A accumulation of mint 1971 to 1999 on presentation cards and packets, with many sets and blocks of four, also hundreds of FDCs from the same period, plus a small quantity of pre-decimal stamps and FDCs, mostly f-vf. Inspect. Est. 300+
447	☒	Accumulation of a few hundred covers, postcards and postal stationery, earlies is 1864 bulk are 20 th century up to 2005, a couple hundred FDCs mostly 1960s to 2000s, covers with special events, registered, Officials, censored, etc, postcards with military, patriotic, humour, royalty, mix of used and unused. Inspection recommended, f-vf. Est. 300+
448	☒	1851/1850 Three covers, 1821 February 2, from Leeds to Turin, Italy, letter written in French, letter charged at 99 cents to collected on delivery, 1840 February 13 Glasgow to Edinburgh and 1850 February 21, Coventry to London, mixed condition, otherwise fine. Est. 100+ Photo Online
449	☒	1866/1903 Ten Victoria and Edward covers and cards, with destinations of Canada, Germany, USA, mostly cancelled by various Duplex cancels, nice lot, minor faults otherwise fine. Est. 250+
450	O	1: PLATE 1A (PE), close to full margins, neat orange red MC, fine. (SG Spec AS 1 - £500). Est. 100+Photo
451	O	1: PLATE 4 (EI), close to full margins, neat red MC, fine. (SG Spec AS 23 - £350) Est. 100+Photo
452	O	1: PLATE 5 (NK), touching to full margins, black MC, fine. (SG Spec AS 25 - £350). Est. 100+...Photo
453	☒	1: PLATE 8 (EG) into to full margins, black MC, on folded letter to Queens Ann Street, London, dated 13 MY 1841, receiver mark in red for the same day, fine. (SG Spec AS 46 -£1000). Est. 100+Photo
454	O	2: PLATE 1 (JE), close to good margins, clear black MC, repaired at right appears fine. (SG Spec DS 5 - £850)	Photo
455	O	3: LONDON CANCELLATIONS , set of 12, on 1841 ONE PENNY RED BROWN , with numbers in black Maltese Cross, cut into to full margins, a few minor faults, otherwise fine. (SG 3000+). Est. 250+Photo Online
456	O	3: -as above, set of 12, on 1841 ONE PENNY RED BROWN , with numbers in black Maltese Cross, cut into to full margins, a few minor faults, otherwise fine. (SG 3000+). Est. 250+ Photo Online
457	O	3: -as above, set of 12, on 1841 ONE PENNY RED BROWN , with numbers in black Maltese Cross, cut into to full margins, a few minor faults, otherwise fine. (SG 3000+). Est. 250+ Photo Online
458	O	3: -as above, set of 12, on 1841 ONE PENNY RED BROWN , with numbers in black Maltese Cross, cut into to full margins, a few minor faults, otherwise fine. (SG 3000+). Est. 250+ Photo Online
459	O	5,6,7: EMBOSSSED ISSUE , five used copies of 6d x1, 10d x2, 1, 1/- x2, cut into to good margins, mostly cancelled with Duplex cancel, f-vf.Photo	5800
460	O	20: 1857 PENNY REDS, perf 14, partially complete used reconstruction, 164 of a sheet of 240 stamps (AA - TL) on twenty leaves, with a variety of Duplex cancels, faults, otherwise fine. Inspect. (SG 40 - £1968). Est. 150+	1886
461	O	176: £1 green SEAHORSE used, faint parcel cancel, good colour, repaired at UL and reperforated at bottom, great space filler. Est. 150+	Photo
462	★★	PRESTIGE BOOKLETS : BK169-BK196: Twenty-eight different 2000 to 2011 cpl, nh, f-vf. (2017 SG Concise DX26-DY1 £888) (Face £187).....	851
463	★	CHANNEL ISLANDS : A collection of mint Jersey, Guernsey, 1941 to 2019, Alderney 1984 to 2019 and Isle of Man 1958 to 2019, appears complete, also small quantity of Jersey and Guernsey Post and Go Booklets and sheetlets, clean, hinged f-vf. Inspect. Est. 300+
464	★	JERSEY : A collection of mint 1969 to 1993 in two Linder albums, incl 1969 set to £1, appears near complete, much in nh and fine. Inspect.....	550

BR. COMMONWEALTH**COLLECTIONS AND LARGER LOTS**

465	★	Collection of over 300 mint from over 17 countries, largely Edward to George VI, cpl sets, omnibus, many nh, some toned, plus Canada George V and VI, incl coils, Airs, Officials some duplication, all appears fresh, f-vf.....	3353
466	★O	A-Z collection Victoria to Elizabeth, stronger from George VI, in three stock books and loose in packets, incl Aden, Bahamas, Barbados, Cayman Is, Jamaica, Malta, Nigeria, Sierra Leone, etc, many partial sets, mostly to 1/-, much appears nh. Packets have mostly 1980s onwards with some early, also two stock books of GB, mostly Elizabeth, with some earlier, clean lot, mainly f-vf. Inspect. Est. 350+.....
467	★O	A-Z mint and used collection, incl Antigua, Australia, Bahamas 1948 to £1, Barbados, Bermuda 1953 issue to £1, Cayman Is. 1953 issue to £1, Gambia 1953 to £1, Malta 1956 issue to £1, Sierra Leone 1961 £1 etc, stronger from George VI onwards with many other singles and part sets, nice clean lot, some duplication, f-vf. Inspect Est. 350+.....
468	★O	A-Z mint and used collection, 1890 to 1989, incl Australia and states, NZ, HK, some British Asia, GB and Canada. Includes souvenir sheets, appears mostly f-vf. Inspect. (Owners cat \$7000+).....
469	★O	Accumulation of mostly British Commonwealth mainly from 1950s to 1980s, with some earlier, incl Niue, Ghana, GB, Antigua etc, many cpl sets, in four albums, some nh and also a worldwide accumulation of many hundreds of Souvenir Sheets, much is nh and fine. Inspect	3575
470	★O	A-Z mint and used stock of George V onwards, in singles, part sets and sets, some duplication, otherwise fine. Est. 400+
471	★O	Collection of Aden to Cayman Is, 1860s to modern, hundreds of both mint and used, appears mostly f-vf. Inspect. Est. 500+
472	★O	Collection of Cyprus to Iraq, on nearly 230 pages 1850s to modern mint and used with many sets with many countries well represented. Inspect. Est. 450+.....
473	★O	Collections of Jamaica to New Zealand, about 20 diff countries, 1860s to modern with hundreds of mint and used on over 170 pages much variety, many sets and much back of the book. Inspect. Est. 450+.....
474	★O	Collection of mint and used in a including Ascension, Bahamas, Barbados, Canada from 1859 Cents, Small Queens, Jubilees, Maps, other issues to 1920s, GB with 1841 1d's and 2d's with later issues QV ad KEVII to Seahorses. Inspect. Est. 400+
475	★O	Collection of Sri Lanka to Zululand on over 80 pages mint and used about 20 different colonies, countries 1860s to modern mostly f-vf. Inspect. Est. 300+
476	★O	Accumulation in 3 albums and on pages mint and used with Australia from Roos and complete sets, some early Mauritius, and New Zealand with BOB, KGV and QEII accumulation. Inspect. Est. 350+...
477	★O	Aden to British Honduras, hundreds of mixed mint and mostly used, mostly 1900s to 1950s, in stock book. quality mixed. Inspect. Est. 150+.....
478	★O	Collection of Aden to Southwest Africa in large binder with both mint and used bit of late 19 th century but mostly KGV, KGV, and QEII all f-vf. Inspect. Est. 350+
479	★O	Collection in three volumes, mixed mint and used, mostly pre-Elizabethan, including Egypt, Mauritius, Norfolk Is, North Borneo, Pitcairn Is, St. Helena, Sarawak, Seychelles, etc, clean and f-vf. Est. 300+...
480	★O	Collection of 3000+ mint and used 1850s to 2000s incl British Africa, Dominica, Falkland Is, Grenada, Montserrat, Mauritius, St. Vincent, mostly clean and f-vf, many sets, mostly f-vf. Inspect. Est. 500+
481	★O☒	Accumulation of a wide range of countries, late 1800s to 2000s, mint and used, singles, sets, souvenir sheets, multiples, few covers, better New Zealand (early Semis), Australia, Ireland, South Africa, etc, regular and BOB issues, quite disorganized so finds could be possible, f-vf. Inspect. Est. 750+.....
482	★O☒	Accumulation of 1880s to 1980s in stock books and binders, some loose pages, PO packs. Hundreds of Australian covers and FDCs. Includes some GB, some Canada but mostly a variety of British Commonwealth countries. Older is mixed condition otherwise f-vf. Inspect. Est. 350+.....
483	★O☒	A mint and used accumulation, incl Australia, Barbados, Bermuda, British Africa, mostly 1950s to 1970s, also a group of commercial and FDC covers, mainly f-vf. Inspect. Est. 250+.....
484	★O☒	The balance of the collection, incl mint and used New Zealand, Fiji, Australia and Canada, also five albums of A-Z used, UN and US, mostly f-vf. Inspect. Est. 150+.....
485	★O☒	Balance of a consignment with Prince Edward Is imperf singles, British Columbia 5 Cents on 3p mint and 1 Dollar on 3p used, both faulty, Bahamas Victoria 5/-, Gold Coast Edward 20/- and 5/- block of 4, New Zealand 1855 2p imperf and 1862 3p imperf both with 1954 BPA certs, plus some Germany, quality a bit mixed, appears mostly f-vf. Est. 150+	Photo Online

486	★O☒	Accumulation of many thousands of mint, used and on cover material, mostly George V on but some earlier, with remaindered collections, neatly sorted and identified on 102s, loose, etc, earlier quality a bit mixed, appears mostly f-vf. Inspect. Est. 250+.....
487	O	Accumulation of mostly used in small carton 1880s to 1990s in stock books, albums, pages and glassines and some covers, note Newfoundland, Cyprus, Dominica, Hong Kong and much more, much is f-vf. Inspect. Est. 400+
488	O	Twelve small to large stock books mostly used, 1936 to 2001 incl. Omnibus, New Zealand, Australia, Hong Kong and much more, mostly f-vf. Inspect. Est. 350+
489	O	A used stock in 5 stock books with Fiji, Malta, Papua New Guinea, South Africa, Botswana, and Swaziland, most are f-vf, Inspect. Est. 250+
490	★O	BRITISH AFRICA: Many hundreds of mint and used, mostly Edwards to 1980s, some earlier, incl Rhodesia, Sierra Leone, South Africa with Homelands, Southern Rhodesia, SWA, Swaziland, a few Revenues and Varieties, duplication, large multiples, appears mostly f-vf. Inspect. Est. 200+
491	★O	BRITISH OCEANIA: Collection of over 220 mint and used to 1970s with New Guinea, Norfolk Is, Nauru, Christmas, Cocos Islands, New Guinea C46-56 and O1-9 mint, plus North West Pacific Is not included in totals, clean and f-vf.....	670
492	☒	Accumulation of hundreds of covers, postcards and postal stationery, mostly early 1900s to 1980s, some FDCs with singles and sets, airmail registered, censored, noted Australia, NZ, RSA among a wide variety of countries (no Canada or GB). Inspection could be beneficial, f-vf. Est. 150+
493	★O	POSTAL STATIONERY: Over twenty, mint and used cards and envelopes, incl Perak, KUT, Burma, Ceylon, Aden, from Victoria to Elizabeth, some duplication, also GB covers and postcards all with GB postage dues, mostly from 1920s and 1930s, mainly f-vf. Inspect. Est. 250+
494	★	OMNIBUS ISSUES: A mint collection in a stock book, incl 1935 Jubilee, 1937 Coronation, 1946 Peace, 1948 Royal wedding (low values), UPU and 1953 Coronation, each issue is 50% complete, f-vf. Inspect. Est. 450+.....
495	★O	A mint and used collection in two albums, incl 1935 Silver Jubilee, 1937 Coronation, 1946 Peace issue, 1948 Silver Wedding, 1949 UPU issue, with many part and full sets, mostly mh, some duplication, otherwise fine. Est. 250+
496	☒	Over 60 mostly FDC with 1948 Silver Wedding (17) no high vals, 1949 UPU (11), Peace (15), 53 Coronation, India, etc, mostly addressed, some Registered, some toning and corner faults, mostly f-vf. Inspect. Est. 250+.....
497	★	AUSTRALIA: Collections, stock of many thousand mostly used on stock pages, mostly George VI and Elizabethan, great lot for the cancel collector, huge cat val. Inspection an must. Est. 500+
498	★	Accumulation of 1920s to modern including imprint blocks, part sheets, PO packs, gutters, etc., huge catalogue and face value, much is nh, mostly f-vf. Inspect. Est. 1500+
499	★O	28/1329,etc: Collection of mostly mint and some used 1929 to 1990s, no Roos or George V heads, many better vals incl Navigators cpl to £2 and \$4, mostly f-vf, huge cat val. Inspect. Est. 1000+.....
500	★O	Accumulation of thousands of mint and used 1929 to 1980s including remaindered collections with large quantity of George V 1d red, Stanley Gibbons albums as new, some mixed quality on earlier, mostly f-vf. Inspect. Est. 500+
501	★	BAHAMAS: 32: £1 venetian red, full og, lh, fine. (SG 57 - £275).....	Photo 350
502	★	43: £1 green and black, full og, fine. (SG 70 - £300).....	Photo 325
503	★★	MR13: 1919 WAR TAX large overprint on 1/-, UL corner block of 20 (4x5) showing Plate 1, toned gum and spot missing on one, folded and creased in selvedge otherwise nh, very fine (SG 104 - £540)Photo Online	550
504	★	BERMUDA: 54: George V £1 red and violet/red, wmk Crown CA, lh, almost very fine. (SG 55 - £275).....	Photo 400
505	★O	BRITISH GUIANA: 65/266,etc: Collection of over 130 mixed of mint and used, 1862 to 1954, including 88A and 145 used, some questionable cancels, quality issues appears mostly f-vf. Some earlier issues not included in totals. Inspect.	1720

BRITISH HONDURAS

506	S	11s/128s,MR4s-MR5s: 18 different SPECIMENS either overprints or PERFIN, with George V Moire ovpts, 1935 Silver Jubilee, War Tax, etc, clean and f-vf. (SG 15s//163s - £755).....	Photo Online
507	O	Great Britain 6d lilac (1856) tied to piece with 'A06' cancel, dated 15 OC 1858, straight edge at top otherwise fine. (SG Z3 - £375) Est. 100+	Photo
508	★	1-2,1var: 1d blue, 1d pale blue and 6d rose, og f-vf. (SG 1/3 - £595).....	Photo 570

509	(★)	15: 4d mauve, Crown CA, unused Plate 1 block of eight, with top row showing *AGENT*(S) of watermark, minute hinge thin in one otherwise fresh and fine. RARE. (SG 15 - £800+). Est. 250+Photo	
510	★★	28var: 1888 10 CENTS on 4d mauve, type 2 local surcharge, block of 12 (6x2), the upper three rows of the sheet with full margins showing two plate number "1", fresh og (except one stamp og). The top margin clearly shows six impressions of an light/albino "20 CENTS" surcharge, stamp nh, SHOWPIECE , RARE. Est. 1000+Photo
511	S	28s-32s,36s,47s: 1888-91 Surcharges, 1¢ to 50¢ cpl with SPECIMEN overprints, some hinging and pencil notations, f-vf. (SG 36s/42s - £375)Photo
512	O	33a: 6 (black) on 10 CENTS on 4d violet, with "6" AND BAR INVERTED , used, very fine. (SG 44a - £1100).....Photo	1200
513	O	34a: 6 (red) on 10 CENTS on 4d violet, with "6" AND BAR INVERTED , used with W.G. A. red signature on back, very fine. 1994 Brandon Cert. (SG 43a - £600).....Photo	725
514	★	35a: 5 on 3 CENTS on 3d brown, with 'FIVE' and BAR DOUBLED , og, hh, fine. (SG 49b - £375) 1990 BPA Cert.....Photo	450
515	O	35a: -with DOUBLE FIVE AND BAR surcharge, small tear and corner crease appears fine. (SG 49b - £425).....Photo	850
516	S	38s-46s,52s-57s: 1891-1901 Victoria, 1¢ to \$5 cpl with SPECIMEN overprints, some hinging and pencil notations, f-vf. (SG 51s/65s - £400).....Photo
517	★	48a,50a: 5¢ ultramarine and 25¢ red-brown and green, both with BEVENUE variety, 25¢ light bends, both with lightly toned og, fine. (SG 66a,68a - £380)Photo	380
518	★	48b,49b,51b: all with 11 mm LONG REVENUE ovpt, light gum toning, 10¢ hh, others vlh hinged, 50 CENTS on 1/- grey with small red LONDON backstamp. (SG 66d,67c,69c - £485)Photo	477
519	★★	49,49a: 10¢ mauve and green with REVENUE ovpt, block of four showing BEVENUE variety on LR, fresh and fine. (SG 67,67a - £410)Photo	388
520	★	49c: 10¢ lilac and green vertical strip of three, top stamp with REVENUE variety, others nh, f-vf. (SG 67,67b - £740)Photo	763
521	S	58s-61s,67s-71s,72s-74s: Edwards, 1¢ to \$5, 13 vals cpl, with SPECIMEN overprints, fresh, f-vf. (SG 80s/83s,87s/93s,96s/100s - £425)Photo
522	S	75s-84s: 1913-17 George V, 1¢ to \$5, 10 vals cpl, with SPECIMEN overprints, fresh, f-vf. (SG 101s/110s - £275).....Photo
523	★	82-84: 1913-17 George V \$1 to \$5, f-vf. (SG 108/110 - £403).....Photo	412
524	O	84: George V \$5, tied to piece with 3 SP 13 SON cds, very fine. (SG 110 - £350)Photo	350
525	S	92s-104s: 1922-33 George V, 1¢ to \$5, 13 vals cpl, with SPECIMEN overprints, fresh, f-vf. (SG 124s/137s - £375).....Photo
526	★★	109var: 4¢ 1935 Silver Jubilee in LL corner margin block of four, showing EXTRA SHORT FLAGSTAFF variety, light overall toning still nh, fine. (SG 144a - £195).....Photo
527	★★	109var: 4¢ 1935 Silver Jubilee in UR counter corner margin block of four, showing LIGHTNING CONDUCTOR variety, nh, very fine. (SG 144c - £96)Photo
528	★	109var: 4¢ Silver Jubilee block of four, with FLAGSTAFF ON RIGHT HAND TURRET variety UL stamp hinged, otherwise nh, fine. (SG 144d - £390).....Photo
529	O	111var: 25¢ Silver Jubilee with EXTRA FLAGSTAFF variety on partial two line PERFIN showing D.C. / AYO, no gum with trace of green crayon from Registration marking, couple short or missing perfs. (SG 146a - £375).....Photo
530	★★	111var: 25¢ 1935 Silver Jubilee, showing LIGHTNING CONDUCTOR variety, fresh and very fine. (SG 146c - £325).....Photo
531	★★	182a: 1¢ Great Curassow, SELF GOVERNMENT 1964 ovpt, ORANGE-BROWN OMITTED . nh, fine. (SG 217b - £300).....Photo	300
532	S	B1-B5: 1932 Belize Relief semi-postals cpl, with PERFORATED SPECIMEN , fresh and f-vf. (SG 138s/142s- £150).....Photo Online
533	☒	B1-B5: 1932 Belize Relief semi-postals cpl, tied by Belize 15 AP 36 British Honduras cds cancels to cover to ENGLAND, with two line straight line EAT BRITISH HONDURAS / GRAPEFRUIT in purple, clean and fine. (SG 138/42 - £463) Est. 150+Photo
534	★	POSTAGE DUES : J3var: 4¢ black, WATERMARK INVERTED , couple short perfs at top otherwise lh, fine. (SG D3bw - £300).....Photo
535	★	WAR TAX : MR1a: 1916 1¢ green with MIS PLACED and INVERTED WAR TAX OVERPRINT , fresh, large guarantee on back, fresh and fine. 2001 BPA Cert. (SG 114a - £300).....Photo	300

536	★	MR3a: 3¢ orange, with DOUBLE OVERPRINT , light gum wrinkle and minute black dot on gum otherwise nh, very fine. (SG 118a - £400).....Photo	425
537	O	CAPE OF GOOD HOPE - ISSUED IN MAKEKING : 179: 1900 3d BADEN-POWELL deep blue, used on piece, dated 1 May 1900, very fine (SASCC 2019 Cat val - 8000 R)Photo	450
538	O	179: 1900 3d BADEN-POWELL deep blue, used on piece, dated 2 Apr 1900, very fine. (SASCC 2019 Cat val 8000 R).....Photo	450
539	★	FALKLAND IS.: 84-96: 1938-46 George VI, ½d to £1 cpl, nh, except 2/6, f-vf. Est. 180+.....Photo
540	★O	FIJI : Accumulation 1890s to modern mint and used, in stock book, much duplication in 1930s to 1950s then recent modern mint sets. Inspect. Est. 400+
541	★	78: Edward VII £1 purple and black on red, small ownership mark on back, fine. (SG 124 - £300)Photo	360
542	★	GIBRALTAR : 75,90,92: £1 violet and black nh, 8/- dull purple and green hinge thin, £1 red-orange and black small hr, fresh, f-vf. (SG 85,101,107 - £655).....Photo	675
543	★	93: £5 violet and black, fresh, small hinge thin otherwise fine. (SG 108 - £1600)Photo	1750
544	★	109a: George VI 1½p carmine, perf 13½, hr, fine. (SG 123a - £275).....Photo	190
545	★	HONG KONG : 82-84: 1903 Edward VII CA watermark, \$2, \$3 and \$5 with light scuff LR, fresh colours, hrs, f-vf.....Photo	1225
546	O	INDIAN STATES - REVENUES : 13 Revenue documents and 25 Telegraphs, plus some other covers, usual mixed quality. Inspect. Est. 100+
547	★	INDIA - FEUDATORY STATES - CHARKHARI : 10var: 1909 1p turquoise-blue, horizontal pair IMPERFORATE BETWEEN , og, hinged, fine. (SG 16a - £250).....Photo
548	(★)	25A: 1940 1a red, no gum as issued, very fine. (SG 41 - £275).....Photo
549	★O	KUWAIT : Collection mint hinged 1945 to 1986, 59/1006, over 370 different with many cpl sets, clean, fresh colours, f-vf.	641
550	★	NEW ZEALAND : B1/B51: Collection of used 1929 to 1956 on pages, incl smiling boys, f-vf. Inspect. Est. 150+..... Photo Online
551	★	NYASALAND PROTECTORATE : 12/134,J1-J5: Collection of 130 different mint, except George V 1½d orange used, virtually complete except £10 vals, fresh, some hrs, f-vf..... Photo Online	1314
552	★	1-10: 1908 Edward VII ½d to £1 cpl, toned perfs on 10/-, backstamp on £1, hrs, couple short perfs on low vals, still fresh and f-vf.....Photo	1064
553	★O	RHODEISA : Stock of mint and used, with many hundreds incl Northern and Southern Rhodesia, Rhodesia and Nyasaland, Nyasaland, and modern Rhodesia, with Arms, ovpts, Double Heads and Admirals, duplication, appears mostly f-vf Est. 150+
554	★	121var: 1½d bistre brown vertical pair with blind perfs between, no trace of perfs cutting, very fine Est. 100+.....Photo
555	★	ST. HELENA : 8(2),10,18-21: 1863 & 1868 ovpts, 1d perf no gum others og, fresh, f-vf.... Photo Online	1585
556	★	81/99: 1½d, 2/6-, 5/-, 7/6-, 10/- and £1 all with minor faults, still appears f-vf	870
557	★	99: £1 red violet and gray on red, small hr, very fine. (SG 96 - £450)Photo	475
558	★	ST. KITTS-NEVIS : 62: 10/-, hr and minute thin at UL, otherwise very fine. (SG 58 - £325).....Photo	325
559	★	SIERRA LEONE : 120: George V £2 Elephant head, violet and ultra, right Plate 1 margin copy, vlh, very fine. (SG 129 - £950) 2000 PF Cert.....Photo	950
560	★O	SOUTHERN RHODESIA : 1/73,J1-J6: Collection of over 175, both mint and used, incl mint 1-11,12, 21-28, 37-73, and used 16-29, 37-73, plus some George VI blocks of 4, mostly f-vf	661
561	★★	14var: George V 5/- blue and blue-green, with interesting KISS PRINT , nh, very fine. BPA Cert stating "Not a true double print but a single 'jarred' impression of the plate". Est. 100+
562	★★	TONGA : 1178,1178var: 2012 TITANIC souvenir sheet 20 perforated and IMPERFORATE , plus Niuafou #288var IMPERFORATE , all nh, mostly couple light corner bends otherwise very fine. Cat as perforated only	960

FOREIGN

COLLECTIONS AND LARGER LOTS

563	P	PROOFS : Accumulation incl New Zealand 2d black on card in blocks, strips and singles, Portugal and Colonies in singles and pairs, appears 1920s onwards, all have hole punches, incl GB, France, US, Virgin Is. Sudan, Brunei, Falkland Is, high cat val, mostly f-vf. Inspect. Est. 750+
-----	---	---	-------

564	★★	Accumulation of thousands, 1920 to 2010 good duplication incl Equatorial Guinea, Guinea, Indonesia, Montserrat Royal Weddings, Mexico, Trinidad and Tobago National Insurance Revenues, with souvenir sheets, large multiples, plus Easdale Is, mostly nh, f-vf. (Owner's Cat val \$12000+)
565	★★	-as above, mostly nh, f-vf. (Owner's Cat val \$12000+)
566	★★	-as above, mostly nh, f-vf. (Owner's Cat val \$12000+)
567	★★	-as above, mostly nh, f-vf. (Owner's Cat val \$12000+)
568	★★	-as above, mostly nh, f-vf. (Owner's Cat val \$12000+)
569	★★	-as above, mostly nh, f-vf. (Owner's Cat val \$12000+)
570	★	Accumulation of mainly mint European countries, in three stock books and loose, incl Norway, Finland, France, Switzerland, Portugal, Berlin, Austria, Belgium, Denmark, Greece, Netherlands and Italy, appears to be from 1980s and 1990s with many, singles, sets and mini sheets, a nice clean lot, much is nh and f-vf. Inspect. Est. 200+
571	★O	Property as received mostly used 20 th century A-Z, largely Europe, beginner Canada collection, USA, GB, some Commonwealth, all in 25 binders, stock books etc. and semi-sorted off and on paper in loose glassines. Appears mostly f-vf. Inspect. Est. 300+.....
572	★O	LAST MINUTE consignment with Canada with Quebecs, Newfoundland, B.A.B.N. SPECIMENS, Great Britain with £1 Victoria, France and Colonies with Epreuve De Luxe, Germany with States and Colonies, Italy, USA with Locals, Newspaper Stamps, PROOFS, IMPERFORATES, Offices in China, MISPERFS, huge catalogue value, careful inspection a must. Est. 3500+
573	★O	Worldwide mint and used accumulation mainly in packets incl on and off paper, unchecked Face value mostly from 1940s to 1970s with 50¢ and \$ values from that period, mostly f-vf. Inspect. Est. 100+
574	★O	Balance of a mint and used collection 1900s to 1980s, incl US mainly used in three albums, GB from late Victoria to Elizabeth, mainly Elizabeth pre-decimal from 1953 to 1969, in blocks and larger multiples, Israel used (no tabs) on pages, Egypt used 1930s to 1940s and a album of over hundred worldwide covers and FDCs 1960s to 1990s, mostly f-vf. Inspect. Est. 300+
575	★O	Balance of a consignment with thousands of mostly 20 th Century with US, UN, worldwide, topicals etc. in 3 binders, loose, on paper, in glassines. Mixed quality. Inspect. Est. 350+
576	★O	Accumulation of 1890s - 1990s Eastern and Western Europe in 3 binders, 102s, large Spain collection, and Albania, Greece Austria etc. Inspect. Est. 250+
577	★O	A world accumulation of many hundreds of mint and used souvenir sheets and mini sheets, mostly from 1920s to 1980s, with some single stamps in 102s, Incl Germany Switzerland, Monaco, Poland, Belgium, Austria, Iceland, Israel, etc, some duplication, otherwise fine. Inspect. Est. 150+.....
578	★O	Balance of a collection, with mint and used, incl Greece, US, Portugal, Eire etc much is in packets and loose, mostly from 1950s to 1980s, v-f. Inspect. Est. 200+.....
579	★O	Accumulation of mint and used, nicely organized by country of 1880 to 2005, incl US, South and Central America, some Cuba and Caribbean, appears mostly f-vf. Inspect. (Owners cat \$4000+)
580	★O	Accumulation of mint and used, Europe nicely organized by country of 1889 to1992, incl Spain, Germany, France, Netherlands, Italy, Portugal, Austria, Scandinavia, and Eastern Europe, appears mostly f-vf. Inspect. (Owners cat \$8500+).....
581	★O	Collection in 14 Citation albums, mint and used with 10s of thousands of stamps, late 1800s to late 1900s, with China, Russia, Indonesia, British Commonwealth, etc, some countries well filled, others sparser, 6 Canada year sets. Inspection highly recommended, huge catalogue value, f-vf. Est. 2500+
582	★O	Accumulation of mint and used, Asia, Africa and mid-East nicely organized by country of 1902 to 2010, incl China, Japan, India, Philippines etc, appears mostly f-vf. Inspect. (Owners cat \$6000+).....
583	★O	A mint and used world accumulation, in four albums, mostly from the 1940s to 1980s, with some earlier, incl France and Colonies, Denmark, Austria, Belgium, Greece, Hungary, Italy, Finland, Japan, Germany mostly used, mainly f-vf. Inspect.	2770
584	★O	A mint and used worldwide accumulation mostly from 1920s to 1980s, in four albums, incl topical collection of wildlife, fish etc, two albums of world with many sets of British Commonwealth, and selection of early Switzerland, mainly f-vf. Inspect.....	4866
585	★O	A mint and used world accumulation in four stock books, appear mostly from 1950s to 1980s, incl some early Austria, French Colonies, various Topicals, Egypt, Sweden, Spain, etc in singles, sets, blocks of four and a few souvenir sheets, much is nh and fine. Inspect	2125
586	★O	A-Z worldwide dealers stock, mint and used, in five trays, incl singles, part sets and cpl sets, booklets, souvenir sheets, etc huge catalogue value, some duplication, otherwise fine. Inspect.	6500

587	★O	Worldwide accumulations in albums, stock books and loose, mostly used with some mint US and British Commonwealth, collection of GB newspaper cancels, US All-American album, Germany modern on and off paper, Romania cpl sheets, topicals with flowers and horses, lots to see, f-vf. Est. 350+.....
588	★O	Balance of the collection, incl Ethiopia 1942 to 1962 mainly mint, Algeria 1920s to 1940s mint and used mostly airmails and Special Air Post, Estonia, with some early ones and BOB, EPiris 1914 sets, plus errors and some Greek occupation, British Solomon Is 1908 to 1931, mainly mint, mostly f-vf. Inspect.....	971
589	★O	A mint and used collection of European Countries, 1852 to 2004, incl Netherlands, used with regulars, semis and dues, Vatican mint in blocks of four and larger multiples, Liechtenstein mint 1969 to 1983, France mint and used 1960 to 1970, world mainly used, mostly f-vf. inspect. Est. 200+
590	★O	A-Z mint and used collection in four Scott International albums, 1890s to 1960s, with sets and part sets, incl France, GB QV and Edwards Govt Parcels mint, India, Spain, US, mostly f-vf. Inspect. Est. 300+
591	★O	Over 75 lots written up on 101s with mint and used, mostly 1850s to 1950s issues, with British Commonwealth, France, Germany and States, Great Britain, Switzerland, USA, etc, appears mostly f-vf. Inspect.	4103
592	★O	Over 75 lots written up on 101s with mint and used, mostly 1850s to 1950s issues, with British Commonwealth, French Colonies, Iceland, Romania, Switzerland with NABA sheet, USA, etc, appears mostly f-vf. Inspect.....	4502
593	★O	Property as received in three cartons, with collection in three Master Global albums, thousands of mixed mint and mostly used 1870s to 1960s, British Commonwealth mostly George V to Elizabeth II, plus Great Britain, Canada, Europe with Belgium, France, Germany, Spain, Switzerland, Asia, USA, appears mostly clean and f-vf. Great cancel lot, possible varieties, etc., 48+ kgs. Inspect. Est. 1000+..
594	★O	Balance of a consignment in two cartons with Four Harris Standard albums 1880s to 1960s, two sets, good mix of Br. Commonwealth, Europe and sparse Asia, suitable for expansion, plus Omnibus, etc, much is clean and f-vf. Inspect. Est. 200+.....
595	★O	Property as received with many thousands of mostly used, with Canada including mint, Newfoundland, GB, Australia, Europe, USA, etc., some in collections, others in packs, sorted in envelopes, quality a bit mixed, appears mostly f-vf. Inspect. Est. 250+.....
596	★O	Property as received with Canada including large multiples of Quebec issue, some without gum, Newfoundland, GB, Belgium, Germany, France and Colonies, etc., quality a bit mixed, appears mostly f-vf. Inspect. Est. 250+.....
597	★O☒	Massive worldwide accumulation of mint and used on stock pages and sheets, loose in envelopes, etc, with country selections, cpl sheets and panes, on and off paper, with better China, Russia, Germany, Philippines, etc, revenues, some Canada, US and British Commonwealth, disorganized, value to be found for sure, f-vf. Inspect. Est. 800+
598	★O☒	Accumulation in over 95 albums and stock books, mint and used late 1800s to 1990s, singles, sets, souvenir sheets, etc, with France and colonies, Russia, China, Europe including Austria, Switzerland, Italy, Belgium, Spain, etc, (no Germany or Netherlands), f-vf. Inspect. Est. 750+.....
599	★O☒	Balance of a collection from around the world, incl Singapore year books 1989,1992 to 1995, 1997 to 2003, China year books for 2000 and 2007, Greenland booklet of Expeditioners 1818 to 1978 and history of air post 1960 to 2015, plus used stamps in packets and postal curiosities and a 'Stamp Atlas' compiled by Stuart Rossiter and John Flower. mostly f-vf. Inspect. Est. 150+
600	★O☒	Balance of a consignment, incl a worldwide used collection, two small boxes of mixed world on paper, plus supplies/ unused safe pages, empty binders and three stock books of various sizes, appears mostly f-vf. Inspect Est. 150+
601	★O☒	Worldwide accumulation of mint and used, with some covers, in five albums and loose, in three cartons incl GB, US, China, some duplication, otherwise fine. Inspect. Est. 250+
602	★O☒	Balance of a consignment with Harris Citation (3) and Senior Statesmen (2) albums with many hundred of mostly used, 1977 Silver Jubilee Collection, some FDC's, some new issues to 2015, quality a bit mixed, much is f-vf. Inspect. Est. 300+.....
603	★O☒	Balance of a consignment in large carton with thousands of mint, used and many covers, with Great Britain, Australia, USA 1940s to 1960s FDCs, China 1990s FDCs, somewhat remaindered old time worldwide albums, clippings, loose in glassines, 2011 SG British Commonwealth 1840-1970 catalogue, quality a bit mixed, much is f-vf. inspect. Est. 500+
604	★O☒	Balance of a consignment with mint and used mostly 1950s on, some earlier, with collections of Canada Great Britain mint and used, Guernsey fairly cpl mint nh to 2000, USA, Europe, loose, clippings, etc, quality a bit mixed, mostly f-vf. Inspect. Est. 350+

- 605 ★O☒ Property as received in four cartons with many thousands of mostly used, some mint and on cover, with A-Z stock in 12 red 102 trays neatly sorted and identified, with Europe, British Commonwealth, etc, slight duplication, four volume Canada Parliament albums empty like new, etc. Inspect. Est. 350+.....
- 606 ★O☒ Balance of a consignment with mint and used Canada Jubilees to 1970s, much face value, Topicals incl Chess, FDCs, Australia, etc, a bit disorganized, mostly clean and f-vf. Inspect. Est. 250+
- 607 ★O☒ Balance of a consignment with Canada, including 1960s to 1970s mint, used collections, 1940s to 1980s Covers incl German WWII Field Post, First Flights incl St. Pierre and Miquelon to Sydney NS signed by pilot, Soviet Zone, etc, quality a bit mixed, much is f-vf. Inspect. Est. 350+
- 608 ★O☒ Property as received with many thousands of mint and used, incl remaindered collections, loose, large quantity on approval sheets, and 102s, with Europe, duplication. Inspection a must. Est. 250+
- 609 ★O☒ Property as received in carton with Belgium and Belgian Congo, Ghana, with mint, used, souvenir sheets, USA with thousands of used in glassines and hundreds of FDCs, quality a bit mixed, much is f-vf. Inspect. Est. 200+.....
- 610 ★O☒ Property as received with 1970s to 1980 Canada FDCs (Cat \$255), CCP souvenir items, Japan souvenir sheets 463a and 545a, worldwide in mostly sorted in small plastics, etc, clean and mostly f-vf. Inspect. Est. 100+
- 611 ★O☒ Balance of consignment with thousands of mint and used in 5 large cartons, Penny Black to 2000s, with remaindered collections, sorted in envelopes, clipping, loose, souvenir sheets, somewhat disorganized, earlier quality a bit mixed, appears mostly f-vf. Inspect. Est. 500+.....
- 612 ★O☒ Property as received with old time worldwide collections 1860s to 1980s, and sorted in envelopes, some covers, plus 1980s mint Austria and Canada face approximately \$300 but some stuck, much is nh, f-vf. Inspection a must. Est. 350+
- 613 O Property as received, A-Z accumulation of 10s of thousands world stamps in six albums and loose in packets, appears mostly used, great lot for the cancel collector, mostly f-vf. Inspect. Est. 200+
- 614 O **KILOWARE** Over 5 kgs of Canada, USA and worldwide, mostly 1950s on, many high values, usual mixed quality. Inspect. Est. 150+.....
- 615 ☒ A collection of hundreds of covers in three albums and loose, from the 1890s to 1970s, incl GB, US, India, Germany, South Africa, many with enclosures, interesting group, mostly f-vf. Inspect. Est. 100+
- 616 ★O Old time world collection in a 1923 Scott International Junior album with many hundreds of mostly used, some mint or unused, 1870s to 1920s, including British Commonwealth, Europe, South and Central America, US with Revenues, quality mixed. Inspect. Est. 600+.....
- 617 ★O Worldwide accumulation in three large cartons plus 1000s of 102 cards plus huge quantity of larger cards, much Europe and British Commonwealth from 20th century. Vast quantity of stamps to organize further. Inspect. (weight 37 kg). Est. 1500+.....
- 618 ★O **D to G:** Thousands of mint and used 1800s to 1990s incl Denmark, Egypt, Finland, Greece, South and Central America, etc, mostly sorted by country, some duplication, mostly f-vf. Inspect. Est. 150+
- 619 ★O **ASIA:** A mint and used accumulation of incl Afghanistan, Indonesia, Japan, Mongolia, Philippines, Russia, Turkey, mostly from 1900s to 1970s, mainly in singles and part sets, f-vf. Inspect. Est. 200+...
- 620 ★O **EUROPE:** A large mint and used accumulation of thousands of incl Belgium, Czech Rep, Denmark, Greenland, Iceland, Finland France and Colonies, Germany, Greece, Hungary, Italy and Colonies, Monaco. Netherlands and Colonies, Poland, Portugal, Spain, Sweden and Switzerland etc, in six albums and stock book, some duplication otherwise fine. Inspect. Est. 250+
- 621 F **FORGERIES:** Over 60 including Canadian Provinces, British Commonwealth, South and Central America, French Colonies, Europe, Sperati, etc. Inspect. Est. 350+ Photo Online
- 622 ★O **SOUTH AMERICA:** A mint and used accumulation of hundreds incl Argentina, Costa Rica, Chile, Ecuador, Brazil, Colombia, Bolivia, Mexico, Nicaragua, Honduras, Guatemala, Paraguay, El Salvador, Uruguay, Venezuela, mostly from 1880s to 1970s, mainly in singles and part sets some duplication, f-vf. Inspect. Est. 250+
- 623 ★O **SOUTH AMERICA:** Collection of mint and used incl Costa Rica 1863 to 1947, Dominican Republic 1865 to 1958, Ecuador 1906 to 1945, Argentina 1890s to 1950s, old time collection with some airs, mostly f-vf. Inspect..... 2490

TOPICALS

- 624 ★O☒ Assorted topical to included Kennedy with over 160 covers mostly FDCs, sets, etc, 1965 Churchill Omnibus cpl, 1939 World's Fair almost cpl, with smaller selections of Red Cross, Roosevelt, Lincoln, etc, quite well organized. Inspection warranted, f-vf. Est. 150+.....

- 625 ★O☒ Collections of various stamps and covers including Princess Diana, over 500 stamps and 150+ souvenir sheets, Titanic, over 100 pieces, World of Stamps, various topics and sets of stamps, WWF Animals of the World, over 80 covers, 1980 Olympics, over 75 covers, most in albums, f-vf. Inspect. Est. 200+
- 626 ★O **ART:** Collection on over 1200 mint and used 1960s to 1970s in three stock books, with Nudes, Children's Art, etc, mostly clean and f-vf. Inspect. Est. 250+
- 627 ★O☒ **ART:** Paintings, sculptures and mosaics, over 400 souvenir sheets, mostly mint plus about 50 covers and maximum cards and loose sets, mostly from Italy and France mostly f-vf. Cat val \$2000+
- 628 ★O☒ **BIRDS:** Over 150 souvenir sheets, mostly MNH plus sets and covers, f-vf. Cat val \$2000+
- 629 ★O☒ **BUTTERFLIES:** About 200 souvenir sheets, including Insects, mostly mint plus covers and sets, much is nh, mostly f-vf. Cat val approx \$1500+
- 630 ★★ **DISNEY:** Five volume collection of mostly mint 1980s issues including souvenir sheets, plus some hinged in separate album, mostly nh, clean and f-vf. (Paid \$2476 Retail)
- 631 ★O **DISNEY:** Carton with over 280 souvenir sheets plus singles, mostly mint, some duplication plus over 100 sets, plus five empty specialty albums. Cat val \$3300+
- 632 ★O **FAUNA:** Shoebox full of mint, used and 100 covers including domestic animals and fish, 170 souvenir sheets, mostly mint, including sets, mostly f-vf. Cat val \$2000+
- 633 ★☒ **FLORA:** Accumulation of hundreds of mint, used and on cover, including domestic animals and fish, 170 souvenir sheets, mostly mint, plus 100 covers and stamp sets, mostly f-vf. Cat val \$2000+
- 634 ★O **KENNEDY:** Collection of over 275 mostly mint, on specialty album pages, including mini sheets, **IMPERFORATES**, some used, clean and f-vf..... 728
- 635 ★O☒ **MUSHROOMS:** Over 230 souvenir sheets, mostly mint plus sets, some duplication, much is nh, f-vf. . 1000+
- 636 ★O☒ **SCOUTS:** Over 350 souvenir sheets mostly mint, minor duplications, plus 30 covers and many sets, much is nh, mostly f-vf. Cat val \$2000+
- 637 ★ **SOUVENIR SHEETS:** 300 different souvenir sheets, good variety of topicals, with Africa, French Colonies, etc, minor duplication, mostly very fine. Cat val approx \$2000
- 638 ★O **SOUVENIR SHEETS:** 500 different souvenir sheets over 50% mint, good variety of topicals, with Africa, Europe, etc., minor duplication, approx cat val \$2500
- 639 ★O☒ **SPORTS:** Accumulation of hundreds of mint, used and on cover, including Olympics, Athletics, Skiing, Hockey, Car racing, Chess etc, over 300 souvenir sheets, plus many sets, duplication, mostly clean and f-vf, much is nh. Cat val \$2000+
- 640 ★O **TRAINS:** Hundreds of mint and used to 1980s with some British Commonwealth, mostly Europe, duplication, mostly clean and f-vf. Est. 150+
- 641 ★O☒ **TRANSPORTATION:** Accumulation of trains, planes, cars, boats, trucks, Zeppelins, rockets, military equipment, fire trucks etc, plus over 400 souvenir sheets, mostly mint plus over 100 covers and stamp sets. Cat val approx \$3000
- 642 ☒ **VIMY RIDGE:** Wonderful collection of over 60 items mostly covers and postcards, 2 letters from soldiers killed shortly after mailing, number shipped via S.S. Montrose, commercial covers, many with inserts, with France 311-12, wide variety of cachets some scarce, ephemera, almost all within period, needs to be seen to appreciate, f-vf Est. 300+
- 643 ★O☒ **WORLD CUP:** Collection of 1938 to 1974 World Cups, with nh, mint and used stamps in sets and souvenir sheets, over 100 covers from 1938 on many FDCs, includes Italy 324-28, C62-65, Italian Colonies 46-50, C29-35 all mint, 10 Artist Proofs all signed, 1966 Omnibus cpl and much more. Inspection recommended, f-vf. Est. 400+
- 644 ★O **PEOPLE IN WW I:** Two volume collection extensively researched and well-documented, of the prominent people and events from the various countries involved in the conflict, over 175 mostly mint stamps and souvenir sheets, a pleasure to view, f-vf. . Est. 250+

FOREIGN COVERS AND POSTAL HISTORY

- 645 ★O☒ **MIDDLE EAST:** Over 40 covers and postcards, 1900s to 1970s, mostly from Iran/Iraq and Syria, with mint and used stamps from Abu Dhabi and UAE, mostly f-vf. Inspect..... 555
- 646 ☒ Approximately 1000 covers and postcards, late 1800s to 1970s, many FDCs, censored, corner advertising, most of the postcards are used with various topical interest, noted good representations of France, Germany, Philippines, Liechtenstein, Russia, etc. Inspection recommended, f-vf. Est. 300+
- 647 ☒ Accumulation of over eighty world covers and cards, from the 1890s to 2000s, incl US, North Korea, Canada with mostly high values, Liberia, Afghanistan, etc, mostly f-vf. Inspect. Est. 300+

648	☒	Accumulation of Stamps and covers from European Countries, incl Poland, Germany, France, Switzerland, mostly 1900s to 1970s, some duplication otherwise fine. Inspect. Est. 250+
649	☒	Worldwide covers and postcards, in excess of 1000, some early but most late 20 th century, with US, some British Commonwealth, Europe, some Topicals with Museums and Radios, postcards mostly unused and modern but some late 1800s, will need inspection, f-vf. Est. 250+
650	☒	1863/1997 Over 65 covers, cards, stationery some unused, with airmails, Registered, FDCs, FFCs, censored, etc, mostly USA, some British Commonwealth and Japan, mostly f-vf. Inspect. Est. 200+....
651	☒	Over 2000 mostly European commercial covers, mostly post 1945, Vatican, Italy, France, Germany, rates, Airmails, FDCs, meters, etc, earlier a bit mixed, mostly f-vf. Inspect. Est. 200+.....
652	☒	Over 2000 mix of commercial, first day covers and maximum cards, worldwide, mostly post 1945 some pre WW1, square circles etc, earlier a bit mixed, mostly f-vf. Inspect. Est. 200+
653	☒	Accumulation of covers, 1840s to 1980s including two vols Story of Canada, three vol Fleetwood FDC of the month from 1980s, British Commonwealth, etc, appears mostly f-vf. Inspect. Est. 150+.....
654	☒	CENSORS: Eight covers from Germany, Liechtenstein, Sweden, Iran and six POW covers, going to Mexico, Germany, France, Denmark, plus a unused POW wrapper, printed in blue, interesting group, mostly f-vf. Inspect. Est. 250+ Photo Online
655	☒	FIRST DAY COVERS: Four collection of approximately 350 different, with 1976 American Revolution, 1977 Silver Jubilee, 1978 History of Aviation and Guernsey 1975 to 2000, clean mostly addressed in large albums, f-vf. Est. 200+.....
656	☒	ZEPPELIN COVERS: 10 covers, 9 being Zeppelin covers including Germany(1929) C37 and C38 on 2 covers, Germany B82-89 tied to cover with 1936 Olympic Village postmark(rarer), US(1933) C18 50¢ green Zeppelin, 2 'Syndicato Condor Ltda', also 1932 Catapult cover, many with additional markings. Inspection recommended, f-vf. Est. 300+..... Photo Online
657	☒	POSTCARDS: Over 450 worldwide, mostly unused, 1910s to 1960s, US, Canada, UK, Germany, etc, with buildings, churches, hotels, etc, will have high retail value, f-vf. Inspect. Est. 150+
658	☒	Over 450 covers, 1904 to 1960, mostly US, with GB and international, all identified by year and value, with buildings, monuments, gardens, scenic views, etc, high retail value, f-vf. Inspect. Est. 150+
659	☒	Over 575 worldwide, mix of used and mostly unused, 1900s to 1970s, with boats/ships, Mexico, cars, artist signed, animals-dogs, cats, etc, f-vf. Inspect. Est. 150+
660	☒	Over 600 worldwide, majority unused, 1910s to 1950s, many US, most black and white or sepia, with men, women, children, dogs, military, few seasonal, buildings, etc, will have high retail value, f-vf. Inspect. Est. 150+.....
661	☒	Over 670 worldwide, majority unused, 1900s to 1960s with most 1930s to 1950s, with scenic views, risqué, historic sites, children, military, etc, good portion US related, f-vf. Inspect. Est. 150+.....
662	☒	Over 580 worldwide, mix of used and unused, 1900s to 1970s, with military, comic, Valentines, sports, fantasy, etc, f-vf. Inspect. Est. 150+
663	☒	Over 650 worldwide, majority unused, 1910s to 1950s, many US, with Niagara Falls, women, caves, churches, verses, vacation spots, etc, will have high retail value, f-vf. Inspect. Est. 150+
664	☒	Over 700 worldwide, majority unused, 1910s to 1960s with most 1930s to 1950s, many US and some Canada with scenic views, city promos, gardens, Native Indians, etc, f-vf. Inspect. Est. 150+.....
665	☒	Over 600 worldwide, majority unused, 1910s to 1960s, many US, with women, buildings, humour, hotels, Greyhound Bus and transportation, etc, f-vf. Inspect. Est. 150+.....
666	☒	Approximately 1000 postcards, 1900s to 1990s, many Canada and US, also Europe and Israel, about 60% addressed, including real photo, Christmas, Easter, etc, mostly f-vf. Inspect. Est. 75+
667	☒	SILKS: Over 45 postcards early 1900s, many with European and Canadian links, flags of various countries, 2 French with Arras(1915) and Louvain(1914), RMS Celtic and Empress of Ireland, Royal Engineers, Field Artillery and Service Corps, etc, some with condition issues, many unused. Inspection recommended, f-vf. Est. 200+
668	★O	BELGIUM: 1863 to 1930s, a mint and used accumulation, incl #13, 35, 36, Semis, Airs and Souvenir Sheets, Belgium Congo, mostly f-vf. Inspect.....	2471
669	★O	251/370,etc: Over 160 mostly mint some used 1910 to 1946, incl many complete sets, Semis, some duplication, many nh, mostly f-vf. No nh premiums added	517
670	☒	Accumulation of thousands of used on piece (2kg), 1940s on, great lot for cancels. Inspect. Est. 100+
671	★O	CHILE: 1853 to 1960: a used collection with some mint, in pairs and singles, early material mixed condition with faults, late material incl Semis, Souvenir sheets and part sheets, mostly f-vf. Inspect.....	2986

- 672 ★O **CHINA**: 1905 to 1980s, a mint and used accumulation, mostly in partial sets and some later blocks of four, incl 1909 Temple of Heaven set, some duplication, otherwise fine. Inspect. Est. 250+
- 673 (★) **CHINA - TREATY PORTS - SHANGHAI**: 2: 4 Candareens yellow, unused, just into to good margins, with some dark ink like marks, appears f-vf. Inspect.....Photo 1000

674 ★★ **PEOPLE'S REPUBLIC OF CHINA**: 1586: **1980 YEAR OF THE MONKEY**, fresh, with usual tiny trace of black stacking offset, nh and very finePhoto 2150

675 ★★ **CROATIA**: 592a: 2005 Europa 50th souvenir sheet, 100 copies, nh, very fine. (Mi BI 27- €3500)..... 6000

FRANCE

676 ☒ **1832/1845** Twenty covers, mostly single folded letters, many with fee markings and other instructional markings, mostly f-vf. Inspect. Est. 150+..... ..

677 ☒ **WWI MILITARY RELATED COVERS**: Collection of 13 items incl one to the Red Cross in Basel, a postcard stamped "Ouvert" by military, other censored covers all with different cachet's in various colours, several stampless, mostly f-vf. Inspect Est. 100+..... Photo Online

678 ★O 1849 to 1940s, a mainly used collection on pages, with good variety of cancels and shades, some faults and mixed condition, otherwise fine 2363

679 ★O Accumulation of better Maxicards including 624, small Maritime Mail cancel collection, year sets 1982-83, mostly mint 1960s-90s issues, coil strips of 5 and 10, souvenir sheets, blocks (mostly used), some 'Documents Officiels' also French post office "Collection Historique" 1981 to 1984 with over 150 issues and high Cat val, mostly very fine. Est. 150+

680 ★O Stock of thousands of mostly mint and mostly used 1870 to 2013 incl Colonies, usual quality, great lot for cancels. Inspect. Est. 150+

681 ★O☒ 2/28,etc: Over 400 mostly used 1849 to 1871 incl some mint and on cover with 1849 Ceres 20c black, 1854 Emperor Napoleon III 40c orange on yellowish, 80c lake on yellowish to USA, plus Essays, Proofs, pairs, cancels, perfs, etc, great lot for the specialist, f-vf. Inspect. Est. 2000+ Photo Online

682 O Accumulation of over 180 used stamps on 9 pages, all pre 1900, with over 30 imperfs, with shades, some duplication, otherwise fine. 5741

683 O Large collection of thousands mounted on hundreds of home-made pages, classics to 2011 issues, many \$1 to \$20 catalogue range, up to 100 each, incl 14 (36), 198 (51), 349 (9), 705 (22), C25 (35) 32 (42), perfins, etc. very good for the cancellation collector, Inspect. (Cat. over \$30000). Est. 500+..... ..

684 ☒ 42-43: 10c bistre and 20c blue tied by "CCH" in lozenge used by **RFRENCH ARMY IN COCHINCINE** with matching hexagonal CORR. D. ARMEES **SAIGON** 29 OC 73 cancel to **FRANCE**, and boxed PD in red, small tear at top of cover o/w attractive and fine. (Cat \$650 as stamps). Est. 150+Photo

685 ★ 107: 50c carmine on rose, type I, blank GUTTER PAIR, lh in gutter and right stamp, just into at top and right otherwise fine.....Photo 400

686 ☒ **FRENCH COLONIES**: 12: 25c blue pair tied by "CCN2" in lozenge used by **RFRENCH ARMY IN COCHINCINE** with matching CORR. D. ARMEES **BEIN-HOA** 18 JANV. 74 cds to Paris **FRANCE**, and boxed PD in red, folded otherwise attractive and fine. Est. 75+..... Photo Online

GERMANY

687 ★O A mainly used collection 1900s onwards, with some states, plus a stock book of mint mostly from inflation period, also nine albums of Ersttagsblatt 1988 to 2000, mostly f-vf. Inspect. Est. 100+

688 ★O☒ Accumulation in over 25 albums and stock books, Germany, States, DDR, and some colonies, mint and used Imperial Eagles to 1990s, singles, sets, souvenir sheets, etc, albums of cancels, most is organized but inspection is recommended, f-vf. Est. 400+

689 ★O☒ A collection of mint and used 1949 to 2014 in nine albums, later mint appears nh, a collection of mainly used Berlin 1948 to 1990 in two albums, plus a large collection of Ersttagsblatt 1986 to 2014, appears f-vf. Inspect (weighs 70kgs). Est. 400+

690 ★O☒ Collections of Germany, States, DDR and Berlin, mint and used, with Germany 2 (used) to 1991 including nh collection 1984 to 1991, DDR 1948 to 1967 (99/959), Berlin 1960 to 1990 most nh, Dealer books, souvenir sheets, Semis, covers, huge Cat Val, f-vf. Inspect. Est. 550+

691 O Collection of hundreds of 1956 to 1991 Ersttagsblatt including Berlin in five albums, with a good range of early issues, mostly f-vf. Est. 150+

692 O Collection used 1872 to 1981 in stock book, neatly organized with better singles and sets, great cancel interest although some during inflation period maybe questionable, few souvenir sheets, with Semis, Airs and Officials, f-vf. Inspect. (Owner's Cat Val over \$7000)

693	☒	POSTCARDS: Over 600 mixed used and unused, 1900s to 1950s, with rivers, bridges, churches, mountains, military, etc, f-vf. Inspect. Est. 150+
694	★O	GERMAN OCCUPATION: Highly specialized collection of Occupation issues 1945 to 1954, mint and used, thousands of stamps in 11 binders, annotated by Scott and Michel #s, with watermarks, perfs, plates, positions, types, etc, with AMG and Dome issues among others, Occupation Zones, many Michel listed varieties. Inspection necessary to appreciate, f-vf. Est. 650+
695	★★	BERLIN: 9N35-9N41: 1949 Von Stephan issue, 7 values cpl, minute natural inclusion on 1M otherwise nh, f-vf. (Mi 35-41 €750)	Photo 550
696	★★	EAST GERMANY (DDR): 1966 to 1986 year sets, mostly two sets each, nh, f-vf.....	3470

HUNGARY

697	★	A mainly mint accumulation / stock in six albums, 1940s to 1980s, in singles, sets, blocks of four and Souvenir Sheets, much is nh and fine. Est. 200+
698	★O	A mint and used accumulation 1916 to 1980s in six albums, with many sets, part sets, singles and sheetlets, some duplication, otherwise fine. Inspect. Est. 150+.....
699	★O	Collection of mostly mint 1871 to 1960, with some used, many part sets, sets. souvenir sheets, airs, semis, a few faults, clean lot, otherwise fine	2550
700	O	Collection of used 1916 to 1970, in album, with sets and part sets, Souvenir Sheets, covers and FDCs, etc, mostly f-vf. Inspect Est. 200+
701	☒	Collection of IMPERFORATE ISSUES on unaddressed FDCs 1969 to 1972, appears near cpl, incl singles, sets, souvenir sheets, mostly f-vf. Inspect. Est. 200+
702	☒	Collection of many hundreds of FDCs 1956 to 1983, in seven albums, incl singles, sets and souvenir sheets, minor duplication, otherwise fine. Est. 250+
703	★	A collection 1874 to 1980, mainly mint 1900 onwards, in four Schaubek albums, incl singles, sets, souvenir sheets, semi postals, much appears nh and fine. Est. 300+

ISRAEL

704	★★	Accumulation of mint part and complete sheets 1952 to 1992, in six albums, much nh, also balance of the collection incl Canada mint mostly 5¢ to 10¢ (not counted) and a boxed of world in packets, f-vf. Inspect Est. 250+.....
705	★	Accumulation of mint with tabs 1950 to 2007, in six albums, in singles, sets and mini sheets, some imperf, appears near complete, f-vf. Inspect. Est. 300+.....
706	★	Accumulation of mint without tabs 1952 to 2006, in three albums and stock book, incl, many singles, sets and mini sheets and some strips, f-vf. Inspect Est. 200+
707	★	A large stock of thousands of singles, pairs, mint block of four or larger multiples, with and without tabs appears from the late 1960s to early 2000s, in 15 albums, much nh, f-vf. Inspect. Est. 450+
708	★O	Accumulation of mint with and without tabs 1948 to 1993, in three albums, incl a forged set of first coins issue to 50m, many singles, sets and mini sheets, appears near complete, f-vf. Inspect. Est. 150+
709	O	Accumulation of mainly used without tabs 1948 to 1990s, in six albums, incl, many singles, sets, some duplication, f-vf. Inspect. Est. 150+
710	☒	Collection of 1956 to 2004 FDCs with and without tabs in nineteen albums, mostly unaddressed, some duplication, otherwise clean and fine. Est. 200+
711	★O	ITALY: 10/461,etc: Collection from 1856 to 1945, mix of mint and used, some mint with disturbed gum, used generally in good conditions with good cancels, defective ones not counted, many stamps in the \$10-50 range, including used 20-21,33,37-44,58-63,108, 167 good cancel 202-3a, E7 good cancel J3-20 used and mint 115-6, 169 disturbed gum 400-8,B 1-4, C 1-2, C 95-99 disturbed gum, E16 gutter pair nh, etc. Neatly identified, plus \$ 800 of unverified cancels, appears mostly f-vf. Inspect	5250
712	O	49: 1879 King Humbert I 30c brown, used pair with CTO, good centering for this issue, almost very fine, RARE in pairs. Est. 250+.....	Photo
713	★★	1292var: 2000L bottom margin copy with DRAMATIC PERF SHIFT nh, very fine. 2010 SBPV Cert. (Sassone 1459b - €9000).....	Photo
714	★★	C42-C47: 1933 Graf Zeppelin issue, cpl set of six, nh and fine	Photo Online 330
715	☒	ITALY - REVENUES: Over 150 documents and cut outs used between 1938 to 1950, much is from WWII period, with a good variety of revenues stamps. mostly f-vf. Inspect. Est. 150+
716	★O	LEBANON: 1/469,etc: Collection over 540 mixed mint and used, 1924 to 1982, many cpl sets especially in Airs, also Dues, earlier quality a bit mixed, appears mostly f-vf. Inspect.	669

717	★★	LIECHTENSTEIN: 1-3: 1912, set of three on thick chalky paper, nh and very fine. (Mi 1-3 - € unlisted nh).....	Photo	900
718	★★	108-110: 1933, set of three perf 14½, nh and very fine. (Mi 119-121 - € unlisted nh).....	Photo	840
719	★★	115: 1934 Agricultural Exhibition Souvenir Sheet, 103x125mm, nh, very fine. (Mi 125 - €2800)...	Photo	2250
720	★★	MACEDONIA: 352-353: 2005 Europa 50 th souvenir sheet of 4 and mini sheetlet of 8, 100 copies each, nh, very fine. (Mi 370-373 sheetlet of 8, BI 13 - €8500)		15000
721	★★	MONTENEGRO: 129E,129E var,130: Europa 50 th Anniversary, 30 souvenir sheets of 4, 30 IMPERFORATE souvenir sheets of 4, and 50 €5.50 souvenir sheets, mostly nh, very fine		3980

NETHERLANDS

722	★O	Collection 1852 to 1956, used early then mint around 1922, more used in later issues, very good Semis, Dues, Officials and Airs, many cpl sets, noted 54, 86, 83a, 104-05, 90-101, B144a, O8, C13-14 among many better items, some cancels questionable, still will have huge catalogue value, f-vf. Est. 850+
723	★O	Collections mint and used 1852 to 1968, with 1-33 cpl used, 1945 more mint, 124-34 used, B144a, 145a mint, Netherlands Indies, Antilles (Curacao), Netherlands New Guinea and Surinam, with Semis, Airs, Officials, etc, some questionable early cancels, still strong collection, f-vf. Inspect. Est. 650+.....	
724	★O	Collections in albums and on album pages and accumulations in stock books, glassines, etc, 1860s to 2003, mint and used, much earlier used with some questionable cancels, with regular and BOB issues, will have huge catalogue value, somewhat organized but inspection suggested, f-vf. Est. 400+.....	
725	★O	2/573,etc: Collection of hundreds of 1852 to 1977 in Schaubek album, mostly used earlier, fairly complete 1930 on Semis, Dues, mini sheets, mostly clean and f-vf. Est. 350+.....	
726		CINDERELLAS: Wonderful collection of over 500, labels including Colonies,1930s to 1960s bulk are 1950s and earlier, many with catalogue #s, most unused, some with postmarks, TB, Red Cross and various other subjects, pleasure to view, fresh colours on most, generally f-vf. Est. 150+. Photo Online
727	★O	NETHERLANDS COLONIES: Collections in Schaubek and homemade albums and accumulations 1870s to 1960s of mint and used with many sets for all Colonies, regular, Semis, Airs, Dues, etc, some extra work could yield very good collections, worth a good inspection, f-vf. Est. 400+
728	☒	Accumulation of over 500 mostly FDCs from Netherlands Antilles (about 200), Suriname (about 180) and Netherlands, 1956 to 1981 and over 100 Netherlands Maxicards 1981 to 1993, colourful cachets, will have a huge catalogue value. Inspection recommended, f-vf. Est. 600+
729	P	NEW CALEDONIA: AIRMAIL: 1938 DIE SUNK PROOF in green MISSING VALUE , very fine. Est. 200+	Photo
730	★O	PORTUGAL: 11/870,etc: Collection of over 475 mostly used 1858 to 1960 including 1867-70, Airs, Red Cross Society mint, Lourenco Marques mint and used, Madeira, mostly clean, some obviously faulty not included in totals, mostly f-vf. Inspect.....		3462
731	★O☒	RUSSIA: 'Russian Camp Mail Stamps', from P.O.W. camps in Germany, over 50 stamps, in two values and designs, in block of four, pairs and singles, both perf and imperf, some with Russian overprints and some misperfed, also five coloured and black and white picture postcards, all with Russian stamps and cancels, appear mostly from 1900s to 1920s, mostly f-vf . Inspect. Est. 250+	Photo Online
732	★O	SAUDI ARABIA: 38a/ 97: Accumulation of mint and used, 1925 to 1961 mostly singles, also Officials and Postage Dues as trail colours and IMPERFORATE PAIRS , mostly f-vf.....	Photo Online	1607
733	★★	SERBIA AND MONTENEGRO: 289a,293a,var: Europa 50 th Anniversary, perf and IMPERFORATE , 30 souvenir sheets each, nh, very fine		1110
734	★★	SLOVENIA: 605a: 2005 Europa 50 th souvenir sheet, 200 copies, nh, very fine. (Mi BI 23 - €600).....		750
735	★O	SOMALIA: Collection in 2 stock books, Italian Somalia early issues to British Occupation and modern Somalia. including 19,41,76,77,81 and 149 used, and 20 mint, B1-3 mint, CB6, J1 etc, appears mostly f-vf. (Will cat over \$1500).....	
736	☒	SPANISH CIVIL WAR: Seven covers 1937 and 1938, all with a variety of censorship marks and town cancellations, some covers roughly opened, otherwise fine. Est. 150+.....	Photo Online

SWITZERLAND

737	★O	Collection 1954 to 2002 in Minkus album, mostly nh, 1991 to 2002 mix of mint and used, number of better including 376-77, 406-09 and B297, all nh, Semis, a few Airs, souvenir sheets and panes, well organized, quite complete, f-vf. Inspect. Est. 250+
738	★O	Collection mostly used 1862 to 1978 on Minkus pages in 4 binders, some mint early and late, Semis quite cpl for the period, many better throughout including 50, 59, 126-45, etc all used, B144 mint, with Airs, Dues, Franchise and a few Officials, will catalogue over \$3100, f-vf. Inspect. Est. 500+.....	

- 739 ★O A collection of mostly mint 1961 to 2000, in two albums with some used, and year pack (99) mint 2000/2005 used, a near complete collection, much is nh and fine 1773
- 740 O Accumulation of 1862 to 2008 issues in 4, 32 page stock books, many with cds cancels, duplication to about 30 in some definitive issues but generally 1-5 for most issues, well organized, shades, some Semis, Airs, Dues, cancel collector interest for sure, f-vf. Inspect. Est. 250+
- 741 ☒ 2: 2½r black and red imperforate, with close to good margins on a folded letter, tied by a Geneva Grid Diamond cancel in black, with a Geneva receiver May 24, 1851 and a Lombard Odier & Co cachet in blue on the front, slight damage to front, otherwise still very fine.Photo 4750
- 742 ★ **OFFICIALS:** 1O2-1O16: **WAR BOARD OF TRADE** complete except for 1O1, fresh, f-vf, 1st set with light Hertsch back stamp and 2nd set with 1974 Hertsch CertPhoto 892
- 743 ★O **THAILAND:** 1/1850,etc: Collection 1883 to 1999, few hundred mostly used early then mix of mint and used, noted many better singles and sets with 129 used, includes Semis, Airs and Officials, f-vf, quality a bit mixed. Inspect. Est. 120+
- 744 ★O **TURKEY:** 4/2523,etc: Collection of 1863 to 1993 mixed mint and used, mostly mint 1930s on, with sets, some souvenir sheets, 1958 City views mint, Semis, Dues, Officials, Newspaper, Postal tax, few Anatolia, earlier quality mixed, some without gum, appears mostly f-vf. Inspect. Est. 250+Photo Online
- 745 ☒ Eleven used picture postcards, 1900s to 1920s, incl advertising and stamp related cards, three WWI, with Austria/Hungary Feldpost 451, (this a unit that fought in the 'Ottermen Army' against the British, mostly f-vf. Inspect. Est. 250+ Photo Online

UNITED STATES OF AMERICA

- 746 ★★ Accumulation of 1995 to 2007 in booklets, sheets, coils, PO fresh, 1¢ to 87¢ mostly 37¢ and 39¢, nh, f-vf. (Face val - \$329)
- 747 ★ Accumulation of year books, mostly from 1970s and 1980s and some put in a album, appears f-vf and mostly nh. (Face val - \$289) Est. 100+..... ..
- 748 ★ Accumulation in blocks, singles, panes and cpl sheets, many 1¢-8¢ values but also numerous 22¢-39¢ values, some stuck down not counted but some could be salvageable, some better early 20th issues. Inspection recommended, f-vf. (Face val - \$319)..... ..
- 749 ★ Accumulation of mint 1950s to 1990s, with some year packs 1976/1982, incl sheets and blocks of four and loose. (Face val - \$295)..... ..
- 750 ★O Mint and used stock mostly from 1920s to 1940s, in singles, pairs and blocks, some pre-cancels, airs, savings etc, duplication otherwise fine. Inspect. Est. 150+
- 751 ★O Collection, accumulation of many hundreds of mixed mint and used mostly Columbians to 1980s, some earlier and some face value, much loose, usual mixed quality. Inspect. Est. 250+
- 752 ★O Collection of hundreds of mint and used 1861 to 1975 in three DAVO hingeless albums, 1920s on mostly mint, earlier quality a bit mixed, otherwise clean and mostly f-vf. Inspect. Est. 350+..... ..
- 753 ★O☒ Accumulation of used in stock books, 102s, loose, etc, 1870s to 2005, many better earlies with much cancel interest including small slogan cancel lot, precancels, BOB, revenues, Canal Zone, Hawaii, Philippines, bit of UN, about 100 covers, somewhat organized with a few small collection but inspection beneficial, f-vf. Est. 450+
- 754 ★O☒ Collection / accumulation 1890s to modern, mostly used sorted in glassines, sparse Scott Album, covers incl Airmails, Pre-cancels, loose, etc., usual quality, much appears f-vf. Inspect. Est. 200+
- 755 O Twenty-five used with 14 used 1851 to 1867, identified by client as 11A to 73 with additional copies of the 1875 3¢ Washington, also 11 used Hawaii 30B/76, 1864 to 1894, with a couple of ovpts, f-vf. Inspect. Est. 250+ Photo Online
- 756 O☒ Accumulation of used and covers, early 1900s to 1994, with USPS Commem Collection 7 vols, 1983 to 1994, over 50 FDCs 1970s to 1990s, couple hundred mostly unused postal stationery, used in stock books and loose, over 40 US Bureau of Engraving items, 1976 to 1984, etc, f-vf. Inspect. Est. 300+
- 757 O☒ Accumulation of mostly used, some covers, large quantity of 1930s Postage Dues, mostly 1950s on but some earlier, mixed quality and disorganized, much is f-vf. Inspect. Est. 150+..... ..
- 758 O **PERFINS:** Two neatly organized stock books with thousands of used, incl Bureau, 1938, Bi-cents, War and Peace, duplication, appears mostly f-vf. Great lot for the perfin position, issue or cancel collector. Inspect. Est. 375+
- 759 O☒ Over 3000 US Commercially used, FDCs and Event covers mostly 1960s to 1990s, with 2 albums and club books of used stamps from the same period, appears f-vf. Inspect. Est. 120+..... ..

760	☒	Large accumulation of thousands of covers, postcards and postal stationery, 1940s to 2000s, vast majority used, with many advertising, FFCs, special event, airmail, military, precancels, government representatives, commercial, definitely needs inspection, f-vf. Est. 450+.....
761	☒	Accumulation of over 1000 covers, postcards and postal stationery all prior to 1940 some back to 1850s and a few stampless earlier than that, many advertising pieces, meters, FFCs, mourning, additional markings, over 90% used, some earlies with condition issues, generally f-vf. Inspect. Est. 500+
762	☒	Accumulation of over 340 covers and postal stationery, 1840s to 1980s, with a few stampless, over 80 pre-1900, over 55 FDCs many from the 1930s and 1940s with better cachets including Staehle, loor, etc, special event, military, railroad, commemorative, some condition issues on earlies, f-vf. Inspect. Est. 500+.....
763	☒	USA - FDCS: Over 180 1940s to 1980s with better cachets including C. Stephen Anderson (50+), Fluegel (40+), Marg (14) and over 20 other cachets including loor, Grandy, Fulton, Colorano, Velvetone, Askin, vibrant colours, f-vf. Inspect. Est. 400+
764	☒	Accumulation of over 320 from 1940s to 1980s with over 40 different cachet makers, saw 'HF' (40+), Cachetcraft (35+), Jackson (15+) among many better, duplication to a couple on a few issues, some unidentified cachets to be determined, f-vf. Inspect. Est. 300+.....
765	☒	Massive accumulation of thousands of 1928 to 2000s, singles, sets, souvenir sheets, etc, huge number of cachet makers, duplication, some postal stationery. Inspection recommended, f-vf. Est. 450+.....
766	☒	Over 600 from 1943 to 1972, in four albums and loose, incl Cachetcraft, Jackson, Chickering, Stephen Andersen, also two albums and loose of United Nations, 1953 to 1970, clean and fresh colors f-vf. Inspect. Est. 350+.....
767	☒	CROSBY CACHETS: Six Crosby cachets 1940 to 1951 including 2 Famous American Scientists series, Tennessee's 150 th Anniversary, Sitka, Alaska, etc, some toning, one with tear across top front. Inspection recommended, f-vf. Est. 300+..... Photo Online
768	☒	POSTCARDS: Over 670 mostly US locales, mostly unused, 1900s to 1970s many more modern era, with nature, city promotions, risque, bridges, hotels, etc, f-vf. Inspect. Est. 300+
769	☒	Over 650 mostly US locales, all appear used, 1900s to 1960s, sorted by state, with gardens, trains, birthday, seasonal greetings, beaches, etc, will have high retail value, f-vf. Inspect. Est. 250+.....
770	☒	Over 650 mostly US locales, some foreign, mostly unused, 1900s to 1960s, sorted by state, with humour, buildings, waterfalls, gardens, trains, bridges, etc, will have high retail value, f-vf. Inspect. Est. 150+.....
771	☒	Over 700 mostly US locales, mostly unused, 1900s to 1970s, with hotels, birthdays, buildings, personal photos, etc, will have high retail value, f-vf. Inspect. Est. 150+.....
772	☒	Over 700 US, mix of used and unused, 1900s to 1970s, with hotels, bridges, factories, transportation, street scenes, etc, will have high retail value, f-vf. Inspect. Est. 150+
773	★★	2904c: (5¢) Non profit organization IMPERFORATE PAIR , nh and very fine	Photo 225
774	☒	AIRMAILS: Accumulation of over 350 covers and postal stationery items, 1927 to 1980s with some to early 2000s, many FDCs, FFCs, special event, different airlines, corner advertising, some better cachets including Staehle, Boll, loor, HF, etc, additional markings and labels, f-vf. Inspect. Est. 200+
775	★★	POSTAL AGENCY IN CHINA: K2: 4¢ on 2¢ rose, Plate 13438 block of 6, nh, fresh and fine	Photo 600
776	★★	USA - REVENUES: R670,R676-R678: 1954 (without ovpt) \$2(26), \$5(32), \$10(173) and \$20(23) carmine, mostly in large multiples, nh, f-vf	1225
777	★O	UNITED NATIONS: Collection of fairly complete to 1980 including 1955 souvenir sheet, plus another not so complete and a stock book with mint and used, mostly clean and f-vf. Est. 150+
778	★O☒	Accumulation of late 1960s to early 1970s mint, mostly in blocks of four or larger multiples, with FDCs from the same period, mostly f-vf. Inspect. Est. 150+
779	★O	VIET NAM: 1/503,etc: Collection of many hundreds of mint and used, 1951 to 1975 fairly complete, many both, plus INDO CHINA 1889 to 1940s, mostly clean and f-vf. Inspect. Est. 500+.....

END OF SALE - THANK YOU